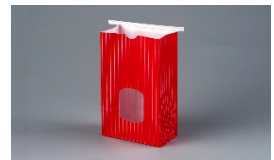


Brown Paper Goods Company

2016 STOCK PRODUCT CATALOG



Manufacturers of Specialty Bags & Sheets for the Food Service Industry Since 1918

3530 Birchwood Drive Waukegan, IL 60085-8334 Phone (800) 323-9099 Fax (847) 688-1458

www.brownpapergoods.com

CONTENTS

GENERAL INFORMATION	2	CONTENTS
	3	TERMS AND CONDITIONS
PAN LINER	4	BAKING PAN LINERS
FLAT WRAP	5	PLAIN WRAPS
	6	PRINTED WRAPS
	7	FOIL WRAPS
INTERFOLD	8	INTERFOLDED SHEETS
BAGS - FAST FOOD	9	POPCORN BAGS
	10	PIZZA BAGS
	11	HOT DOG AND SUB BAGS
	12	FOIL HOT DOG AND SANDWICH BAGS
	13	FRENCH FRY BAGS
	14	PLAIN SANDWICH BAGS
	15	PRINTED SANDWICH BAGS
BAGS - BAKERY BREAD	16	WHITE MG & WAXED BREAD BAGS
	17	PRINTED BREAD BAGS
	18	NATURAL PANEL BAGS
BAGS - S.O.S AUTOMATIC STYLE	19	WAXSEAL AUTOMATIC BAKERY BAGS
	20	CARRY OUT SACKS & SCHOOL LUNCH BAGS
BAGS - COFFEE / CANDY	21	COFFEE / CANDY DUPLEX AUTOMATIC BAGS
BAGS - DELI DUPLEX CARRY-OUT	22	A LA CARTE CARRY-OUT DELI BAGS
ROLLS AND DELI SHEETS	23	STEAK PAPER DISPLAY SHEETS
	24	STEAK PAPER ROLLS
	25	WHITE BUTCHER & TABLE COVER ROLLS
	26	FREEZER ROLLS
	27	PATTY PAPERS - BUTCHER SHEETS
	28	NATURAL BUTCHER, & MARKET ROLLS
TABLE TOP - HOSPITALITY - GIBLET	29	DOGGIE - CANDY BAGS - GIBLET BAGS
	30	NAPKIN RING BANDS
	31	SILVERWARE BAGS - JAN SAN - HOSPITALITY ITEMS
GLASSINE & CELLOPHANE	32	GLASSINE BAGS
	33	CELLOPHANE BAGS & SHEETS
PRODUCE BAGS	34	POLY MESH PRODUCE HARVEST BAGS
INDICES	35	CATEGORY INDEX
	36	NUMERICAL INDEX A
	37	NUMERICAL INDEX B

BROWN PAPER GOODS TERMS & CONDITIONS

Terms of Sale

Freight	Full freight allowed on combined shipments of 1,000 pounds or more to all states except Alaska and Hawaii. These states will be sold F.O.B. Waukegan, IL
Minimum Order	Brown will accept no orders under \$500.00.
Drop Shipments	Drop Shipments at weights under the prevailing freight minimum for a given customer will be invoiced as FOB Mill or "Plus Freight".
Payment Terms	1% 10 days, Net 30 Days. There is no cash discount allowed on freight and other special charges. A service charge of 1-1/2% per month will be added to past due accounts. All prices are subject to change without notice.
Lead Times	Most stock orders ship within 2 days of receipt. Customs conforming in size and material to Brown stock products are shippable in eight weeks after artwork has been approved and a PO has been received. Exotic (non stock conforming) customs often take several weeks longer to produce, especially if unusual paper must be ordered. Please check with your BPG representative about current prevailing lead times.
Claims & Returns	No claim request will be accepted later than five (5) days after receipt of the order by buyer. No returns will be accepted without prior assignment of a Return Authorization Number by Brown. After a year from shipment no product is eligible for return. Outdated stock designs and custom prints are also ineligible for return. Returned stock product will be subjected to a 15% restocking fee as well as freight. Credit will be issued according to net prices sold, not invoice prices sold.

Non-Stock Product Information

Custom Order Minimums <i>Brown provides custom prints for most categories of items as follows:</i>	Bags - Up to 4 colors - 25M Bags - 5-8 colors - 100M Interfolded Sheets - 300M Rolls - 50 Sheets - 100M
Material Contracts	After a contractual guarantee is signed by the customer, paper will be obtained and held. An expedited lead time of three (3) weeks to convert the paper is part of such an agreement.
Floor Stock Contracts	Traditional Min / Max agreements are available for those customers meeting our minimum requirements. Currently this requires movement of 50,000 bags per month or 250,000 wraps per month. As these standards sometimes fluctuate, please see your BPG representative for the latest requirements.

BAKING PAN LINERS



Brown offers an extensive line of Baking Pan Liners. Whether you need 1 bake or multiple bakes, we have a sheet for you. These are available in both white and natural. Most sheets are Star-K approved as designated below:

ITEM#	SIZE	DESCRIPTION		PACK PER CASE	CS. WT.	CS. CUBE	TI	HI	
158-2	8-3/16 x 24-3/8	1/2 Sheet (Long)	1 Bake	☆	2,000	23	1.10	4	16
161-1	12-1/8 x 16-3/8	1/2 Sheet	1 Bake	☆	1,000	12	0.38	4	16
161-2	12-1/8 x 16-3/8	1/2 Sheet	1 Bake	☆	2,000	24	0.60	4	15
159-1	16-3/8 x 24-3/8	Chromium Free	Premier	☆	1,000	24	0.60	4	16
162-1	16-3/8 x 24-3/8	Quilon	1 Bake	☆	1,000	24	0.60	4	15
160-1	16-3/8 x 24-3/8	Economy Grade Quilon	SAVE HERE !	☆	1,000	24	0.60	4	15
168-1	16-3/8 x 24-3/8	Natural Kraft Quilon	1 Bake	☆	1000	24	0.60	4	15
162-50	16-3/8 x 24-3/8	Retail Package Quilon	HOME USE !	☆	10/50	12	0.70	8	6
163-1	16-3/8 x 24-3/8	25# Silicone	3 Bakes	☆	1,000	25	0.60	4	15
164-1	16-3/8 x 24-3/8	35# Silicone	7 Bakes	☆	1,000	32	0.70	4	12
163-P	16-3/8 x 24-3/8	27# Silicone Parchment	Heavy Duty	☆	1,000	27	0.60	4	13
165-1	16-3/8 x 24-3/8	35# Silicone Parchment	Premium	☆	1,000	32	0.70	4	12
169-1	12-1/8 x 16-3/8	1/2 Size Nat Chromium Free	E-Kraft Premium		1000	13	0.59	8	15
167-1	16-3/8 x 24-3/8	Natural Chromium Free	E-Kraft Premium		1000	24	0.60	4	16

CIRCLES

166-6	6"	Grease Resistant Quilon Coated		1,000	2	0.07	42	22
166-7	7"	Grease Resistant Quilon Coated		1,000	2	0.10	20	20
166-8	8"	Grease Resistant Quilon Coated		1,000	3	0.13	20	20
166-9	9"	Grease Resistant Quilon Coated		1,000	4	0.16	16	4
166-95	9"	Grease Resistant Quilon Coated		5,000	18	0.73	8	5
166-10	10"	Grease Resistant Quilon Coated		1,000	5	0.19	12	20
166-11	11"	Grease Resistant Quilon Coated		1,000	6	0.23	9	20
166-12	12"	Grease Resistant Quilon Coated		1,000	7	0.27	12	4
166-13	13"	Grease Resistant Quilon Coated		1,000	8	0.32	12	14

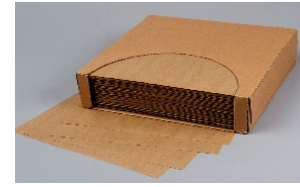
☆ *As marked, this means Star-K approved and indicated on the case.*

Ask about our printed pan liner option. Silicone pan liners are available printed 2 colors.

For Pizza Liners please see page 26.

HAN-D-PAK™ PLAIN WRAPS

Alternatives in substrate, color, size and pack set Brown above the rest. No competitor has the range of options offered to YOU here!
Durable Han-D-Pak™ dispenser cartons speed and simplify your operation.



ITEM#	SIZE	DESCRIPTION	PACK PER CASE	CS. WT.	CS. CUBE	TI	HI
7B2-T	6 x 6	Flat Packed Pick-Up Tissue	10 / 1,000	11	0.63	10	7
7B2	6 x 6	Dry Waxed Patty Paper	10 / 1,000	14	0.63	10	7
7B1	12 x 12	Menu Tissue	1,000	4	1.40	12	18
7B1-A	12 x 12	Menu Tissue	10 / 1,000	40	1.40	6	5
7B4	12 x 12	Dry Waxed White	5 / 1,000	35	1.00	9	5
7B9	12 x 16	Dry Waxed White	4 / 1,000	42	1.00	6	7
7B14	14 x 14	Dry Waxed White	4 / 1,000	46	1.10	6	7
7G14	14 X 14	Dry Waxed White	4 / 1,000	40	0.40	6	5
7B15	15 x 15	Dry Waxed White	4 / 1,000	39	1.20	6	6
7B1516	15 x 16	Dry Waxed White	3 / 1,000	32	1.20	6	7
7B11	15 x 20	Dry Waxed White	3 / 1,000	41	1.40	6	7
7B16	16 x 16	Dry Waxed White	3 / 1,000	44	1.20	6	7
7B18-1	18 x 18	Dry Waxed White	1,000	15	0.60	4	15
7B3	9 x 12	Dry Waxed White	6 / 1,000	30	0.83	7	10
7G1516	15 x 16	Grease Resistant White	3 / 1,000	33	0.42	6	7
7B12	12 X 12	Grease Resistant White	5 / 1,000	32	1.00	9	3
7H1516	15 X 16	Grease Resistant-Wet Strength Heavy Duty	3 / 1,000	39	0.42	6	7
7B4-YC	12 x 12	Grease Resistant - Canary Yellow	5 / 1,000	35	1.00	9	4
7B14-Y	14 x 14	Grease Resistant - Canary Yellow	4 / 1,000	40	1.10	6	7
7B4-YG	12 x 12	Grease Resistant - Goldenrod Yellow	5 / 1,000	35	1.00	9	4
7B4-NK	12 x 12	Dry Waxed Natural Kraft	5 / 1,000	35	1.00	9	3
7B15-NK	15 X 15	Dry Waxed Natural Kraft	3 / 1,000	30	1.20	6	18
7B12-NK	12 X 12	Grease Resistant Natural Kraft	5 / 1,000	32	1.00	9	3
7B14-NK	14 x 14	Grease Resistant Natural Kraft	4 / 1,000	34	1.10	6	5
7B1516-NK	15 X 16	Grease Resistant Natural Kraft	3 / 1,000	38	0.42	6	7
7G16-NK	16 x 16	Grease Resistant Natural Kraft	3 / 1,000	42	1.42	6	7

QUILTED DUPLEX WRAPS

7Q12	12 X 12	Paper/Poly/Paper White - Microwaveable	5/500	22	0.30	9	5
7Q1516	15 X 16	Paper/Poly/Paper White - Microwaveable	1000	15	0.50	6	4
7QC12	12 X 12	Paper/Paper White - Microwaveable - Compostable	5/500	22	0.30	9	5
7QC1516	15 X 16	Paper/Paper White - Microwaveable - Compostable	1,000	19	0.50	6	4
7QC12-NK	12 X 12	Paper/Paper Natural Kraft - Microwaveable - Compostable	5/500	23	0.30	9	5
7QC1516-NK	15 X 16	Paper/Paper Natural Kraft - Microwaveable - Compostable	1,000	22	0.50	6	4

For pizza liners please see page 26

For butcher paper sheets please see page 14

Custom prints are available for all listed items. Our normal custom run requirement is 100,000 sheets.

HAN-D-PAK™ PRINTED WRAPS

Whether your application requires a moisture barrier, absorbability, or natural appearance, we have an item for you. Drywaxed Wraps are the choice for moist sandwich varieties. Grease Resistant Wraps are best suited for hot sandwiches. All wraps contain wet-strength to resist tearing after exposure to moisture. Brown offers a multitude of designs, substrates, and coatings. Most wraps are packaged in dispenser inner boxes strong enough for transport.



ITEM#	SIZE	DESCRIPTION	PACK PER CASE	CS. WT.	CS. CUBE	TI	HI
7B9-RC	9 x 12	Grease Resistant - Red Check	6 / 1,000	30	0.08	9	5
7B5-BL	9 x 12	Dry Waxed - Blue Delicious	6 / 1,000	30	0.83	7	9
7B5-BR	9 x 12	Dry Waxed - Brown Delicious	6 / 1,000	30	0.83	9	5
7B5-G	9 x 12	Dry Waxed White Wrap - Green Delicious	6 / 1,000	30	0.83	7	10
7B5-H	9 x 12	Dry Waxed - Red "Hot Dog"	6 / 1,000	30	0.83	9	5
7B5-R	9 x 12	Dry Waxed - Red Delicious	6 / 1,000	30	0.83	6	5
7B5-Y	9 x 12	Dry Waxed - Yellow Delicious	6 / 1,000	30	0.83	7	9
7P12-R	12 x 10-1/2	Dry Waxed Basket Liner - Red Gingham	2 / 1,000	12	0.40	12	10
7P12-BL	12 x 10-1/2	Dry Waxed Basket Liner - Blue Gingham	2 / 1,000	12	0.40	12	10
7B10-RC	12 x 10-1/2	Dry Waxed Basket Liner - Red Check	2 / 1,000	12	0.40	12	10
7P6-R	12 x 12	Dry Waxed Basket Liner - Red Gingham	5 / 1,000	34	0.10	9	5
7B4-BK	12 x 12	Dry Waxed - Black Check	5 / 1,000	35	1.00	9	5
7B4-BL	12 x 12	Dry Waxed - Blue Check	5 / 1,000	35	1.00	9	5
7B4-HTG	12 x 12	Dry Waxed - Green Check	5 / 1,000	35	1.00	9	5
7B4-R	12 x 12	Dry Waxed - Red Check	5 / 1,000	35	1.00	9	5
7B4-YEL	12 x 12	Dry Waxed - Yellow Check	5 / 1,000	35	1.00	9	5
7B6-BL	12 x 12	Dry Waxed - Blue Delicious	5 / 1,000	35	1.00	9	5
7B6-BR	12 x 12	Dry Waxed - Brown Delicious	5 / 1,000	35	1.00	9	5
7B6-C	12 x 12	Dry Waxed - Cheeseburger	5 / 1,000	35	1.00	9	5
7B6-G	12 x 12	Dry Waxed - Green Delicious	5 / 1,000	35	1.00	9	5
7B6-H	12 x 12	Dry Waxed - Hamburger	5 / 1,000	35	1.00	9	5
7B6-MEX	12 x 12	Dry Waxed - Mexico Theme	5 / 1,000	35	1.00	9	5
7B6-NEWS	12 x 12	Dry Waxed - Newsprint	5 / 1,000	35	1.00	9	5
7B6-R	12 x 12	Dry Waxed - Red Delicious	5 / 1,000	35	1.00	9	5
7B6-Y	12 x 12	Dry Waxed - Yellow Delicious	5 / 1,000	35	1.00	9	5
7B7-C	12 x 12	Dry Waxed - Cheeseburger Wave	6 / 1,000	42	1.00	9	4
7B7-D	12 x 12	Dry Waxed - Delicious Wave	6 / 1,000	42	1.00	9	4
7B7-H	12 x 12	Dry Waxed - Hamburger Wave	6 / 1,000	42	1.00	9	4
7P6	12 x 12	Dry Waxed - 4 Way Multi	5 / 1,000	34	0.10	9	5
7B4NK-BK	12 x 12	Dry Waxed Natural Kraft - Black Check	5 / 1,000	35	1.00	9	3
7B4NK-BL	12 x 12	Dry Waxed Natural Kraft - Blue Check	5 / 1,000	35	1.00	9	3
7B4NK-G	12 x 12	Dry Waxed Natural Kraft - Green Check	5 / 1,000	35	1.00	9	3
7B4NK-R	12 x 12	Dry Waxed Natural Kraft - Red Check	5 / 1,000	35	1.00	9	3
7B4NK-Y	12 x 12	Dry Waxed Natural Kraft - Yellow Check	5 / 1,000	35	1.00	9	3
7BCHILE	12 x 12	Grease Resistant - Chile Design	5 / 1,000	32	1.00	9	4
7B12-BK	12 X 12	Grease Resistant - Black Check	5 / 1,000	32	1.00	9	3
7B12-BL	12 X 12	Grease Resistant - Blue Check	5 / 1,000	32	1.00	9	3
7B12-HTG	12 X 12	Grease Resistant - Green Check	5 / 1,000	32	1.00	9	3
7B12-RC	12 X 12	Grease Resistant - Red Check	5 / 1,000	32	1.00	9	3
7B9-FNC	12 x 16	Dry Waxed - Fish N Chips	4 / 1,000	42	1.00	6	7
7B15-R	15 x 15	Dry Waxed - Red Check	4 / 1,000	39	1.20	6	6
7B8	15 x 15	Dry Waxed - Fish N Chips	4 / 1,000	47	1.20	6	7
7P16	15 x 16	Dry Waxed Basket Liner - Red Gingham	3 / 1,000	33	1.20	6	7
7P15-R	15 x 16	Dry Waxed - Red Delicious	1,000	12	0.40	6	18
7B11-P	15 x 20	Dry Waxed - Red Delicious	3 / 1,000	41	1.40	6	7
7B16-BK	16 x 16	Dry Waxed - Black Check	3 / 1,000	34	0.87	6	7
7B16-HTG	16 x 16	Dry Waxed - Green Check	3 / 1,000	34	0.87	6	7
7B16-RC	16 x 16	Dry Waxed - Red Check	3 / 1,000	34	0.87	6	7
7P20-G	16 x 20	Dry Waxed - Green Delicious	1,000	15	0.50	4	16

Custom prints are available for all listed items. Our normal custom run requirement is 100,000 sheets.

HAN-D-PAK™ FOIL WARMING WRAPS & BAGS

Cushion Foil slows heat loss and provides uniform heat distribution under thermal lamps. Additionally, the inner sheet wicks away excess moisture and helps keep hot foods fresh, not soggy. Our HAN-D-PAK™ dispenser boxes make storage and transport easy. Save on inventory with our multi-use wraps.



ITEM#	SIZE	DESCRIPTION	PACK PER CASE	CS. WT.	CS. CUBE	TI	HI
5C12	9 x 12	Plain	5 / 500	16	0.40	10	6
5C1212	12 x 12	Plain	5 / 500	24	1.00	9	5
5C12-HD	9 x 12	Printed - Hot Dog	5 / 500	16	0.40	10	6
5C13	10-1/2 x 13	Plain	5 / 500	21	0.40	10	6
5C13-2B	10-1/2 x 13	Printed - Blue Wave	4 / 500	17	0.03	9	8
5C13-2G	10-1/2 x 13	Printed - Green Wave	4 / 500	17	0.03	9	8
5C13-2M	10-1/2 x 13	Printed - Magenta Wave	4 / 500	17	0.03	12	7
5C13-2R	10-1/2 x 13	Printed - Red Wave	4 / 500	17	0.03	9	8
5C13-2T	10-1/2 x 13	Printed - Teal Wave	4 / 500	17	0.03	12	7
5C13-2Y	10-1/2 x 13	Printed - Yellow Wave	4 / 500	17	0.03	12	7
5C13-2CB	10-1/2 x 13	Printed - Blue Check	4 / 500	17	0.03	12	7
5C13-2CG	10-1/2 x 13	Printed - Green Check	4 / 500	17	0.03	12	7
5C13-2CM	10-1/2 x 13	Printed - Magenta Check	4 / 500	17	0.03	12	7
5C13-2CR	10-1/2 x 13	Printed - Red Check	4 / 500	17	0.03	12	7
5C13-2CT	10-1/2 x 13	Printed - Teal Check	4 / 500	17	0.03	12	7
5C13-2CY	10-1/2 x 13	Printed - Yellow Check	4 / 500	17	0.03	12	7
5C13-BL	10-1/2 x 13	Printed - Blue Delicious	5 / 500	21	0.40	10	6
5C13-G	10-1/2 x 13	Printed - Gold Delicious	5 / 500	21	0.40	10	6
5C13-R	10-1/2 x 13	Printed - Red Delicious	5 / 500	21	0.40	10	6
5C14	10-1/2 x 14	Plain	5 / 500	24	0.60	10	6
5C14-BL	10-1/2 x 14	Printed - Blue Delicious	5 / 500	24	0.60	10	6
5C14-BQ	10-1/2 x 14	Printed - Barbeque	5 / 500	24	0.60	10	6
5C14-C	10-1/2 x 14	Printed - Cheeseburger	5 / 500	24	0.60	10	6
5C14-FC	10-1/2 x 14	Printed - Chicken / Fish	5 / 500	24	0.60	10	6
5C14-G	10-1/2 x 14	Printed - Gold Delicious	5 / 500	24	0.60	10	6
5C14-GR	10-1/2 x 14	Printed - Green Delicious	5 / 500	24	0.60	10	6
5C14-H	10-1/2 x 14	Printed - Hamburger	5 / 500	24	0.60	10	6
5C14-HC	10-1/2 x 14	Printed - Hamburger / Cheeseburger	5 / 500	24	0.60	10	6
5C14-R	10-1/2 x 14	Printed - Red Delicious	5 / 500	24	0.60	10	6
5C14-RB	10-1/2 X 14	Printed - Barbeque / Roast Beef	5 / 500	24	0.60	10	6
5C16	14 x 16	Sub Wrap Plain	1,000	15	0.40	6	10

CUSHION FOIL BAGS

5Q01	6 x 3/4 x 6-1/2	Printed - Delicious	1,000	7	2.10	20	8
5Q04	6 x 3/4 x 6-1/2	Plain	1,000	7	2.10	20	8
5Q06	6 x 3/4 x 6-1/2	Printed - Hamburger	1,000	7	2.10	20	8
5Q10	3-1/2 X 1-1/2 X 8-1/2	Printed - Hot Dog	1,000	7	2.10	20	8
5Q12	3-1/2 X 1-1/2 X 8-1/2	Plain	1,000	7	2.10	20	8
5Q16	6 x 3/4 x 6-1/2	Printed - Chicken	1,000	7	2.10	20	8
5Q22	6 x 3/4 x 6-1/2	Printed - Cheeseburger	1,000	7	2.10	20	8

Custom prints are available for all listed items. Our normal custom run requirement is 100,000 sheets.

INTERFOLDED WAXED & POLY SHEETS

Whether you need to pick up doughnuts in a self-serve setting or if you are looking to interleave meats or cheeses for deli prep, Brown has the interfold options for you. Light waxed tissues are ideal for bakery pick up. Waxed deli sheets make fine basket liners. Heavy Duty Waxed Deli Sheets are perfect for interleaving meats and cheeses. Versatile poly sheets are the economical option. Natural Kraft Waxed sheets are currently in highest demand. We have them all for you. Brown waxed sheets are FDA Approved for direct food contact and - for those concerned with allergens - **SOY-FREE**.

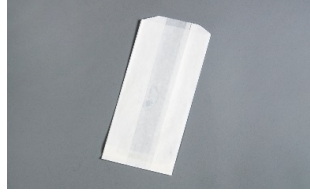


ITEM#	SIZE	DESCRIPTION	PACK PER CASE	CS. WT.	CS. CUBE	TI	HI
2006	10-3/4 x 6	Waxed Bakery Pick Up Tissue	10 / 1,000	13	0.39	1	1
2006-6	10-3/4 x 6	Waxed Bakery Pick Up Tissue	6 / 1,000	13	0.39	1	1
2008	10-3/4 x 8	Waxed Bakery Pick Up Tissue	10 / 1,000	28	0.90	10	6
2010	10-3/4 x 10	Waxed Bakery Pick Up Tissue	8 / 1,000	26	1.00	12	5
2012	10-3/4 x 12	Waxed Bakery Pick Up Tissue	6 / 1,000	27	0.80	12	7
2015	10-3/4 x 15	Waxed Bakery Pick Up Tissue	6 / 1,000	30	1.10	16	3
2106	10-3/4 x 6	Waxed Deli Sheets	12 / 500	18	0.70	10	8
2108	10-3/4 x 8	Waxed Deli Sheets	12 / 500	22	0.90	12	6
2108-RC	10-3/4 x 8	Waxed Deli Sheets - Printed Red Check	12 / 500	22	0.90	12	6
2110	10-3/4 x 10	Waxed Deli Sheets	12 / 500	28	1.10	12	5
2110-2	10-3/4 x 10	Waxed Deli Sheets	4 / 500	9	0.31	1	1
2112	10-3/4 x 12	Waxed Deli Sheets	12 / 500	33	1.30	12	4
2112-RC	10-3/4 x 12	Waxed Deli Sheets - Printed Red Check	12 / 500	33	1.30	12	4
2115	10-3/4 x 15	Waxed Deli Sheets	12 / 500	39	1.60	12	3
2115-RC	10-3/4 x 15	Waxed Deli Sheets - Printed Red Check	12 / 500	41	1.60	12	3
2206	10-3/4 x 6	Waxed Heavy Duty Deli Sheets	12 / 500	21	0.70	10	8
2208	10-3/4 x 8	Waxed Heavy Duty Deli Sheets	12 / 500	27	0.90	12	6
2208-2	10-3/4 x 8	Waxed Heavy Duty Deli Sheets	4 / 500	9	0.25	16	10
2210	10-3/4 x 10	Waxed Heavy Duty Deli Sheets	12 / 500	33	1.10	12	5
2210-2	10-3/4 x 10	Waxed Heavy Duty Deli Sheets	4 / 500	11	0.31	1	1
2212	10-3/4 x 12	Waxed Heavy Duty Deli Sheets	12 / 500	40	1.30	12	4
2212-2	10-3/4 x 12	Waxed Heavy Duty Deli Sheets	4 / 500	13	0.37	12	8
2215	10-3/4 x 15	Waxed Heavy Duty Deli Sheets	12 / 500	50	1.60	12	3
2006-NK	10-3/4 x 6	Natural Waxed Bakery Pick Up Tissue	10 / 1,000	23	0.70	10	8
2106-NK	10-3/4 x 6	Natural Waxed Deli Sheets	12 / 500	18	0.70	10	8
2108-NK	10-3/4 x 8	Natural Waxed Deli Sheets	12 / 500	22	0.90	12	6
2110-NK	10-3/4 x 10	Natural Waxed Deli Sheets	12 / 500	28	1.10	12	5
2112-NK	10-3/4 x 12	Natural Waxed Deli Sheets	12 / 500	33	1.30	12	4
2115-NK	10-3/4 x 15	Natural Waxed Deli Sheets	12 / 500	41	1.60	12	3
2306	10-3/4 x 6	High Density Poly Interfold	10 / 1,000	12	0.70	12	7
2308	10-3/4 x 8	High Density Poly Interfold	10 / 1,000	16	0.90	9	5
2310	10-3/4 x 10	High Density Poly Interfold	10 / 1,000	20	1.10	12	4
2312	10-3/4 x 12	High Density Poly Interfold	10 / 1,000	23	1.30	12	4
2315	10-3/4 x 15	High Density Poly Interfold	10 / 1,000	29	1.60	12	3

Custom prints are available for all listed, non poly, items. Our normal custom run requirement is 50 cases or 300,000 bags.

WHITE MG TRADITIONAL POPCORN BAGS

Whether you are selling popcorn at the County Fair, carnivals, convenience stores, or the local bank, Brown has the bag you need. Plain and printed bags are available in all standard sizes. For Theater Popcorn Style bags, please see below.



ITEM#	SIZE	DESCRIPTION	PACK PER CASE	CS. WT.	CS. CUBE	TI	HI
503	3-1/2 x 6-1/2	Peanut Design	10 / 1000	33	3.30	4	3
520	3 x 2 x 7	3/4# Size	10 / 1000	48	4.20	4	3
522	3-1/2 x 2 x 8	1# Size	6 / 1000	36	3.30	8	3
524	4 x 2-1/2 x 8-1/4	1-1/2# Size	6 / 1000	43	3.30	8	3
526	4-3/4 x 1-1/4 x 12	2# Size	2,000	23	1.60	9	5
521	3 x 2 x 7	"Popcorn Fresh!" - 3/4# Size"	10 / 1000	48	4.20	4	3
521-1	3 x 2 x 7	"Popcorn Fresh!" - 3/4# Size 1M"	1,000	5	4.20	20	8
510	3-1/2 x 2 x 8	"Popcorn Fresh!" - 1# Size"	6 / 1000	36	3.30	8	3
510-1	3-1/2 x 2 x 8	"Popcorn Fresh!" - 1# Size 1M"	1,000	10	1.60	16	10
510-WC	3-1/2 x 2 x 8	"Popcorn Fresh!" - 1# Size 2M/Cs"	2,000	36	3.30	10	6
512	4 x 2-1/2 x 8-1/4	"Popcorn Fresh!" - 1-1/2# Size"	6 / 1000	43	3.30	8	3
508	4 x 1-3/4 x 10	"Popcorn Fresh!" - Jumbo Size"	1,000	9	1.40	16	10
514	4-3/4 x 1-1/4 x 12	"Popcorn Fresh!" - 2# Size"	2,000	23	1.60	9	5
514-1	4-3/4 x 1-1/4 x 12	"Popcorn Fresh!" - 2# Size 1M/Cs"	1,000	23	1.60	9	10
506	5 x 1-1/4 x 3 x 10	"Popcorn Fresh!" - Pleated Bag"	2,000	17	1.60	9	6
506-R	5 x 1-1/4 x 3 x 10	"Popcorn Fresh!" - Pleated Bag Retail Pack"	8 / 350	17	1.60	8	5
530	6 x 3/4 x 18	"Popcorn Fresh!" - "Texas Size"	1,000	19	1.00	7	9

DUPLEX THEATER STYLE POPCORN BAGS

Although this style of bag began as an alternative for tubs and boxes in theaters, it has become standard in other venues as well. Anywhere popcorn is sold, these highly glossed, grease resistant bags are prized for their ability to be preloaded and placed for display. They are cheaper than boxes or tubs and store more conveniently.



3032	4-1/4 x 2-1/2 x 6-3/4	Grease Resistant Lined SOS Style Yellow	32	1,000	20	0.90	9	5
3032-B	4-1/4 x 2-1/2 x 6-3/4	Grease Resistant Lined SOS Style Black	32	1,000	20	0.90	10	4
3046	4-1/4 x 2-1/2 x 8-3/4	Grease Resistant Lined SOS Style Yellow	46	1,000	24	1.10	10	4
3046-B	4-1/4 x 2-1/2 x 8-3/4	Grease Resistant Lined SOS Style Black	46	1,000	24	1.10	10	5
3085	5-1/2 x 3-1/4 x 8-1/2	Grease Resistant Lined SOS Style Yellow	85	500	16	0.90	7	10
3085-B	5-1/2 x 3-1/4 x 8-1/2	Grease Resistant Lined SOS Style Black	85	500	16	0.90	7	10
3130	7-1/2 x 3-1/2 x 9-3/4	Grease Resistant Lined SOS Style Yellow	130	500	25	1.00	6	7
3130-B	7-1/2 x 3-1/2 x 9-3/4	Grease Resistant Lined SOS Style Black	130	500	25	1.00	6	7
3170	7-1/2 x 3-1/2 x 11	Grease Resistant Lined SOS Style Yellow	170	250	15	0.88	9	5
3170-B	7-1/2 x 3-1/2 x 11	Grease Resistant Lined SOS Style Black	170	250	15	0.88	9	5
3032-NK	4-1/4 x 2-1/2 x 6-3/4	Grease Resistant Lined SOS Style Natural	32	1,000	20	0.90	10	4
3046-NK	4-1/4 x 2-1/2 x 8-3/4	Grease Resistant Lined SOS Style Natural	46	1,000	24	1.10	10	5
3085-NK	5-1/2 x 3-1/4 x 8-1/2	Grease Resistant Lined SOS Style Natural	85	500	16	0.90	7	10
3130-NK	7-1/2 x 3-1/2 x 9-3/4	Grease Resistant Lined SOS Style Natural	130	500	25	1.00	6	7
3170-NK	7-1/2 x 3-1/2 x 11	Grease Resistant Lined SOS Style Natural	170	250	15	0.88	9	5

Custom prints are available for all listed items. Our normal custom run requirement is 25,000 bags. Prints of over 4 colors or of elaborate design have a 100,000 bag minimum.

PIZZA BAGS

Very popular for many years in the Midwest, pizza bags are less expensive and easier to store than boxes. Use with a corrugated circle and a pizza tripod and deliver in a mobile warming oven. Brown a size for any pizza you make as well as two stock prints and plain bags - **Mama Mia! That's a complete selection.**



ITEM#	SIZE	DESCRIPTION	PACK PER CASE	CS. WT.	CS. CUBE	TI	HI
9B01	7 x 6-1/2	Grease Resistant Double Opening Slice Bag	6 / 1000	40	2.06	8	4
13A12	4-3/4 x 1-1/4 x 12	Grease Resistant Bread Stick Bag - Printed	2,000	22	1.50	9	5
9B02	10 x 1 x 12	White Mg Pizza Bag - Trattoria Design	1,000	20	1.60	9	5
9B03	12 x 15	White Mg Pizza Bag - Trattoria Design	1,000	27	1.60	7	9
9B04	14 x 1 x 17	White Mg Pizza Bag - Trattoria Design	1,000	38	2.20	6	7
9B06	16 x 2 x 20	White Mg Pizza Bag - Trattoria Design	1,000	53	2.70	4	5
9B05	12 x 15	White Mg Pizza Bag - Quattro Design	1,000	27	1.60	7	9
9B08	10 x 1 x 12	White Mg Pizza Bag - Quattro Design	1,000	20	1.60	9	5
9B10	14 x 1 x 17	White Mg Pizza Bag - Quattro Design	1,000	38	2.20	6	7
9B12	16 x 2 x 20	White Mg Pizza Bag - Quattro Design	1,000	53	2.70	4	5
9B13	12 x 15	White Mg Pizza Bag - Plain	1,000	27	1.60	7	9
9B14	10 x 1 x 12	White Mg Pizza Bag - Plain	1,000	20	1.60	8	4
9B16	14 x 1 x 17	White Mg Pizza Bag - Plain	1,000	38	2.20	6	7
9B18	16 x 2 x 20	White Mg Pizza Bag - Plain	1,000	53	2.70	4	5
9B20	19 x 2 x 24	White Mg Pizza Bag - Quattro Design	500	37	1.70	4	9
9B22	19 x 2 x 24	White Mg Pizza Bag - Plain	500	37	1.70	4	9

Custom prints are available for all listed items. Our normal custom run requirement is 25,000 bags. Prints of over 4 colors or of elaborate design have a 100,000 bag minimum.

PIZZA LINERS

Quilon Pizza Liners provide a perfect grease resistant layer between your pizza and any container surface whether chip-board or corrugated. Silicone Parchment liners do that and more. Their moisture resistant properties allow you to interleave frozen pizza dough and then to later bake on it. The silicone coating provides excellent release.



9C10-Q	10 x 10	Quilon Greaseproof Liner	1,000	8	0.17	16	15
9C12-Q	12 x 12	Quilon Greaseproof Liner	1,000	10	0.25	9	18
9C1218-Q	12 x 18	Quilon Greaseproof Liner	1,000	13	0.40	4	16
9C14-Q	14 x 14	Quilon Greaseproof Liner	1,000	12	0.35	6	18
9C16-Q	16 x 16	Quilon Greaseproof Liner	1,000	14	0.45	6	15
9C18-Q	18 x 18	Quilon Greaseproof Liner	1,000	20	0.57	6	18
9C08-Q	8 x 8	Quilon Greaseproof Liner	1,000	6	0.11	6	18
9C09-Q	9 x 9	Quilon Greaseproof Liner	1,000	7	0.16	16	16
9C10	10 x 10	Silicone Parchment Liner	1,000	9	0.22	16	16
9C12	12 x 12	Silicone Parchment Liner	1,000	13	0.32	12	10
9C14	14 x 14	Silicone Parchment Liner	1,000	18	0.44	8	15
9C16	16 x 16	Silicone Parchment Liner	1,000	21	0.57	4	15
9C18	18 x 18	Silicone Parchment Liner	1,000	29	0.71	4	15
9C08	8 x 8	Silicone Parchment Liner	1,000	6	0.22	6	18

Please see page 3 for more, irregular, size options.

HOT DOG AND SUB BAGS

Brown's Grease Resistant hot dog bags have excellent moisture hold out. They are a staple of the summer season and are especially effective for hot-to-go foods and microwave use in convenience stores. Our classic White MG sub bags now come in a variety of lengths. Natural Kraft sub bags are also available. Brown's new Wrap-Around sub bags are great for prepackaged refrigerated display, enhancing product promotion.



ITEM#	SIZE	DESCRIPTION	PACK PER CASE	CS. WT.	CS. CUBE	TI	HI
618	3 x 3/4 x 7	Corn Dog Bag - Grease Resistant	5 / 1,000	18	1.70	8	4
606	3-1/2 x 1-1/2 x 8-1/2	Hot Dog Bag - Grease Resistant	5 / 1,000	25	2.20	6	4
608	3-1/2 x 1-1/2 x 8-1/2	Hot Dog Bag Plain - Grease Resistant	5 / 1,000	25	2.20	6	4
608-30WC	3-1/2 x 1-1/2 x 8-1/2	Hot Dog Bag Plain - Grease Resistant	2,000	10	1.70	10	8
610	3-1/2 x 1-1/2 x 12	Foot Long Hot Dog Bag - Grease Resistant	5 / 1,000	35	2.60	6	4
612	3-1/2 x 1-1/2 x 12	Foot Long Hot Dog Bag Plain - Grease Resistant	5 / 1,000	35	2.60	6	4
602	3-1/2 x 2 x 9	Double Opening Hot Dog Bag - Grease Resistant	5 / 1,000	30	2.20	8	5
604	3-1/2 x 2 x 9	Double Opening Hot Dog Bag Plain - Grease Resist.	5 / 1,000	30	2.20	8	4

Sub Bags

1310-NK	4-1/2 X 2 X 10	Shorty Sub Bag Plain - Natural Kraft	1,000	12	0.83	6	11
622	4-1/2 x 2 x 12	Sub Bag Printed - White MG	1,000	14	0.65	11	16
614	4-1/2 x 2 x 14	Sub Bag Printed - White MG	2,000	28	1.60	9	4
624	4-1/2 x 2 x 14	Sub Bag Printed - White MG	1,000	14	0.80	6	11
616	4-1/2 x 2 x 16	Sub Bag Printed - White MG	1,000	18	0.90	11	16
626	4-1/2 x 2 x 14	Sub Bag Plain - White MG	1,000	14	0.80	6	11
626-NK	4-1/2 x 2 x 14	Sub Bag Plain - Natural Kraft	1,000	17	1.00	6	11

Wrap-Around Sub Bags

622-WA	4-1/2 X 2-3/4 X 11-3/4	Poly Coated Corner Window Sub Bag	1/500	23	0.84	7	10
622-NKWA	4-1/2 X 2-3/4 X 11-3/4	Natural Kraft Poly Coated Corner Window Sub Bag	1/500	22	0.84	7	10

Fluted Trays

601	4-1/8 X 8-1/4	8" Hot Dog Tray	6 / 500	13	0.75	10	6
603	4-1/8 X 12-1/4	12" Hot Dog Tray	6 / 500	27	2.40	8	4

Custom prints are available for all listed items excepting the Fluted Trays. Our normal custom run requirement is 25,000 bags. Elaborate prints have a 100,000 bag minimum.

FOIL HOT DOG & SANDWICH BAGS

Whether selling to convenience stores, sporting events, schools, or fast food outlets, nothing keeps food warmer than a good foil bag. You can choose from a multitude of designs and sizes. There are bags with paper out or with foil out, as you require.



ITEM#	SIZE	DESCRIPTION	PACK PER CASE	CS. WT.	CS. CUBE	TI	HI
5A10	3-1/2 x 1-1/2 x 8-1/2	Printed - Hot Dog (Foil Out - Paper In)	1,000	9	1.9	16	9
5A12	3-1/2 x 1-1/2 x 8-1/2	Plain - Hot Dog (Foil Out - Paper In)	1,000	9	1.9	16	9
5A14-P	3-1/2 x 1-1/2 x 12	Printed - Footlong Hot Dog (Foil Out - Paper In)	1,000	13	0.7	12	8
5A14	3-1/2 x 1-1/2 x 12	Plain - Footlong Hot Dog (Foil Out - Paper In)	1,000	13	0.7	12	8
5A08	8-1/2 x 1-7/8 x 5	Printed - Pocket (Top Loading) (Foil Out - Paper In)	1,000	10	1.5	16	11
5A00	3-1/2 x 1-1/2 x 8-1/2	Printed - Burrito (Foil Out - Paper In)	1,000	9	1.9	16	10
5A06	6 x 3/4 x 6-1/2	Printed - Hamburger (Foil Out - Paper In)	1,000	9	2.1	16	9
5A22	6 x 3/4 x 6-1/2	Printed - Cheeseburger (Foil Out - Paper In)	1,000	9	2.1	16	9
5A24	6 x 3/4 x 6-1/2	Printed - Barbeque (Foil Out - Paper In)	1,000	9	2.1	16	9
5A16	6 x 3/4 x 6-1/2	Printed - Chicken Bag (Foil Out - Paper In)	1,000	9	2.1	16	9
5A26	6 x 3/4 x 6-1/2	Printed - Fish (Foil Out - Paper In)	1,000	9	2.1	16	11
5A02	6 x 3/4 x 6-1/2	Printed - Sandwich (Foil Out - Paper In)	1,000	9	2.1	16	9
5A04	6 x 3/4 x 6-1/2	Plain - Sandwich (Foil Out - Paper In)	1,000	9	2.1	16	9
5A37	6 x 2 x 8	Printed - Barbeque (Foil Out - Paper In)	1,000	14	0.5	10	8
5A32	6 x 2 x 8	Printed - Cheeseburger (Foil Out - Paper In)	1,000	14	0.5	12	8
5A36	6 x 2 x 8	Printed - Hamburger (Foil Out - Paper In)	1,000	14	0.5	12	8
5A33	6 x 2 x 8	Printed - Fish (Foil Out - Paper In)	1,000	14	0.5	10	8
5A31	6 x 2 x 8	Printed - Tenderloin (Foil Out - Paper In)	1,000	14	0.5	12	8
5A20	6 x 2 x 8	Printed - Delicious (Paper Out - Foil In)	1,000	14	2.3	12	8
5A30	6 x 2 x 8	Plain - Jumbo (Foil Out - Paper In)	1,000	14	0.5	9	10
5A38	8-1/2 x 1-7/8 x 5	Printed - Pouch (Top Loading) (Foil Out - Paper In)	1,000	14	0.5	16	11
5A42	4 x 2 x 10	Printed - Hot & Delicious (Foil Out - Paper In)	1,000	15	0.6	9	10

Custom prints are available for all listed items. Our normal custom run requirement is 25,000 bags. Prints of over 4 colors or of elaborate design have a 100,000 bag minimum.

FRENCH FRY BAGS

French Fry bags have long been the safest and most economical package for dispensing this favorite fast food staple. The Grease Resistant paper used in French Fry bags is a perfect hold out barrier for hot grease. A range of sizes is available to ensure portion control. Bright white paper allows for vibrant stock prints while plain bags make versatile packages for Onion Rings, Jalpeno Poppers, and many other fried treats. - ALL THIS AT A MINIMAL COST!



ITEM#	SIZE	DESCRIPTION	PACK PER CASE	CS. WT.	CS. CUBE	TI	HI
807	4-1/2 x 3-1/2	Plain Bag - Side Order Chain Size	10 / 1000	19	1.66	8	5
807-3WC	4-1/2 x 3-1/2	Plain Bag - Side Order Chain Size	2,000	5	4.60	16	11
805	4-1/2 x 3-1/2	Printed Bag -Side Order Chain Size	10 / 1000	19	1.66	8	5
805-1	4-1/2 x 3-1/2	Printed Bag -Side Order Chain Size	1,000	3	1.66	16	10
811-6WC	4-1/2 x 4-1/2	Plain Bag - Side Order #6 Size	2,000	6	0.46	16	11
803	4-7/8 x 4	Plain Bag - Side Order Medium Size	10 / 1000	19	1.66	8	5
801	4-7/8 x 4	Printed Bag -Side Order Medium Size	10 / 1000	19	1.66	8	5
801-WC	4-7/8 x 4	Printed Bag -Side Order Medium Size	2,000	19	1.66	16	11
808	5-1/2 x 1 x 4	Plain Bag - Side Order Large Size	8 / 1000	22	2.06	8	4
806	5-1/2 x 1 x 4	Printed Bag -Side Order Large Size	8 / 1000	22	3.00	8	4
808-12WC	5 x 1-1/2 x 4-1/2	Plain Bag - Side Order #12 Size	2,000	6	0.50	16	10
810	5 x 3/4 x 4	Plain Bag - Side Order Alternate Large Size	8 / 1000	22	2.06	8	4
813-8WC	5 x 4-1/2	Plain Bag - Side Order Alternate Large Size	2,000	6	0.50	16	10
804	5-1/2 x 1 x 8	Plain Bag - Dog And Fries Size	5 / 1000	30	3.00	8	3
802	5-1/2 x 1 x 8	Printed Bag -Dog And Fries Size	5 / 1000	30	3.00	8	3
815-9WC	5-1/2 x 4-1/2	Plain Bag - Side Order Alternate Medium Size	2,000	8	0.50	16	8
809	4-3/4 x 3/4 x 5-3/4	Printed Bag -Side Order Transparent Glassine	2,000	9	0.40	12	10

Custom prints are available for all listed items. Our normal custom run requirement is 25,000 bags. Prints of over 4 colors or of elaborate design have a 100,000 bag minimum.

PLAIN SANDWICH BAGS

Brown has a complete selection of single serve, inexpensive sandwich bags. Burgers, Bagels, Sandwiches, Tacos... We have a bag to fit your customer's every need. Aside from a wide range of sizes to choose from, we carry papers which are Grease Resistant, Dry Waxed, Natural Kraft Grease Resistant, Canary Yellow Grease Resistant, and Transparent Wet Waxed. Our Double Opening Style bags make loading a snap. They double beautifully for french fry cones. Popular bag sizes are available in a variety of different pack configurations.



ITEM#	SIZE	DESCRIPTION	PACK PER CASE	CS. WT.	CS. CUBE	TI	HI
704	6 x 3/4 x 6-1/2	Dry Waxed Standard Style	6 / 1,000	36	2.06	8	4
704-18WC	6 x 3/4 x 6-1/2	Grease Resistant Standard Style	2,000	12	0.78	10	9
710	6 x 3/4 x 6-1/2	Grease Resistant Standard Style	6 / 1,000	30	2.06	8	4
710-4	6 x 3/4 x 6-1/2	Grease Resistant Standard Style	4 / 1000	41	2.00	6	3
704-19WC	6 x 3/4 x 7-1/4	Grease Resistant Standard Style	2,000	14	0.78	10	9
704-19YWC	6 x 3/4 x 7-1/4	Yellow Grease Resistant Standard Style	2,000	14	0.78	10	9
715-10WC	6 x 4-1/2	Grease Resistant Standard Style	2,000	9	0.60	20	8
716-14WC	6 x 6-1/2	Grease Resistant Standard Style	2,000	11	0.60	12	8
712-25WC	6-1/2 x 1 x 8	Grease Resistant Standard Style	2,000	16	0.95	10	8
712-25NK	6-1/2 x 1 x 8	Nat Kraft Grease Resistant Standard Style	2,000	16	0.95	7	7
712-26NK	6-1/2 x 2 x 8	Nat Kraft Grease Resistant Standard Style	2,000	24	1.00	7	7
714	7 x 3/4 x 9	Grease Resistant Standard Style	2,000	18	1.00	7	8
714-1	7 x 3/4 x 9	Grease Resistant Standard Style	1,000	9	1.00	16	8
720-16WC	8 x 6-1/2	Grease Resistant Standard Style	2,000	15	0.70	10	9
Transparent and Translucent Bags							
7A02	6 x 3/4 x 7	Waxed Transparent Standard Style	6 / 1,000	38	2.06	8	4
7A04	6 x 1 x 7-3/4	Waxed Translucent Standard Style	6 / 1,000	40	2.40	20	8
7A01	6 X 3/4 X 6-1/2	Waxed Translucent Standard Style	2,000	7	0.21	10	9
Double Opening Style Bags							
705	7 x 6-1/2	Dry Waxed Double Opening Style	6 / 1,000	32	2.06	8	4
707	7 x 6-1/2	Grease Resistant Double Opening Style	6 / 1,000	28	2.06	8	4
707-NK	7 x 6-1/2	Nat Kraft Grease Resistant Double Opening Style	2,000	11	0.78	8	4
711-NK	9 x 10	Nat Kraft Grease Resistant Double Opening Style	2,000	12	0.80	9	6

Custom prints are available for all listed items . Our normal custom run requirement is 25,000 bags. Prints of over 4 colors or of elaborate design have a 100,000 bag minimum.

Please see page 24 for printed single serve bag designs.

PRINTED SANDWICH BAGS

Brown white Grease Resistant bags have a treatment to provide grease and moisture hold-out. The bright white paper takes a vibrant print and highlights your products. Hot sandwiches - NO PROBLEM.



ITEM#	SIZE	DESCRIPTION	PACK PER CASE	CS. WT.	CS. CUBE	TI	HI
708-H	6 x 3/4 x 6-1/2	Hamburger Bag Printed	6 / 1,000	30	2.06	8	4
708-C	6 x 3/4 x 6-1/2	Cheeseburger Bag Printed	6 / 1,000	30	2.06	8	4
708C-WC	6 x 3/4 x 6-1/2	Cheeseburger Bag Printed	2,000	30	2.06	10	9
706-BL	6 x 3/4 x 6-1/2	Sandwich Bag - Printed Blue "Delicious"	6 / 1,000	30	2.06	8	4
706-BR	6 x 3/4 x 6-1/2	Sandwich Bag - Printed Brown "Delicious"	6 / 1,000	30	2.06	8	4
706-G	6 x 3/4 x 6-1/2	Sandwich Bag - Printed Green "Delicious"	6 / 1,000	30	2.06	8	4
706-R	6 x 3/4 x 6-1/2	Sandwich Bag - Printed Red "Delicious"	6 / 1,000	30	2.06	8	4
706-Y	6 x 3/4 x 6-1/2	Sandwich Bag - Printed Yellow "Delicious"	6 / 1,000	30	2.06	8	4
710-A	6 x 3/4 x 6-1/2	Sandwich Bag - Printed Fresh Baked	4 / 250	6	0.70	12	8
7C6	5-1/2 x 1 x 4	Onion Ring Bag Printed	8 / 1,000	22	2.06	8	4

For pickles packaging try Brown's Waxseal™ "Pickle Barrel" printed bag!



7C3	6-1/4 x 8-1/2	Pickle Bag Printed	2,000	12	0.60	7	7
-----	---------------	--------------------	-------	----	------	---	---

For faster loading at peak foodservice times try Brown's "Double Opening" alternatives. They load faster and are ideal for eating on the run.



709	7 x 6-1/2	Double Opening Printed Delicious	6 / 1,000	30	2.06	8	4
701	7 x 6-1/2	Double Opening Printed Hamburger	6 / 1,000	30	2.06	8	4
703	7 x 6-1/2	Double Opening Printed Sandwich	6 / 1,000	30	2.06	8	4
7C2	7 x 6-1/2	Double Opening Printed Taco	6 / 1,000	30	2.06	8	3
711	9 x 10	Double Opening Printed Delicious	1,000	11	0.78	12	11

Custom prints are available for all listed items. Our normal custom run requirement is 25,000 bags. Prints of over 4 colors or of elaborate design have a 100,000 bag minimum.

Please see page 23 for other bags options in plain.

WHITE BREAD BAGS

Traditional Waxseal™ bread bags ensure freshness protection and better shelf life. Unwaxed MG bags produce a crisp, artisan, crust.



ITEM#	SIZE	DESCRIPTION	PACK PER CASE	CS. WT.	CS. CUBE	TI	HI
1428	4-1/2 x 3 x 10	Waxsealed Plain White - Short Loaf	1,000	17	0.60	9	10
1402	4-1/2 x 4 x 14-1/2	Waxsealed Plain White - Small Rye Size	1,000	27	0.10	7	9
1404	5-1/4 x 3-1/4 x 11	Waxsealed Plain White - Special 4# Size	1,000	21	0.80	7	10
1400	5-1/4 x 3-1/4 x 12	Waxsealed Plain White - 1/2 Loaf Size	1,000	22	1.00	7	10
1406	5-1/4 x 3-1/4 x 18	Waxsealed Plain White - Italian Bread Size	1,000	33	1.40	4	10
1408	5-1/4 x 3-1/4 x 20	Waxsealed Plain White - Large Vienna Size	1,000	33	1.30	4	10
1430	6 x 2-1/2 x 20	Waxsealed Plain White - Large Rye Size	1,000	36	1.70	6	7
1410	6 x 3-1/2 x 13	Waxsealed Plain White - Special 6# Size	1,000	27	1.00	7	9
1412	6 x 3-1/2 x 14-1/2	Waxsealed Plain White - Rolls And Doughnuts Size	1,000	30	1.50	6	7
1414	6 x 3-1/2 x 16	Waxsealed Plain White - Special 8# Size	1,000	33	1.50	6	7
1416	6 x 3-1/2 x 18	Waxsealed Plain White - Special	1,000	37	1.50	6	7
1420	6 x 3-1/2 x 20	Waxsealed Plain White - Long Coffee Bag Size	1,000	35	1.50	6	7
1424	9-1/4 x 2-1/4 x 14	Waxsealed Plain White - Coffee Cake Size	1,000	35	1.50	9	5
1426	11-1/2 x 2 x 16	Waxsealed Plain White - Kringle Size	1,000	46	1.60	6	7
1432	12 x 1-1/2 x 18	Waxsealed Plain White - Large Kringle Size	1,000	51	1.80	4	7
1216	4-1/2 x 2 x 16	White MG Plain - Sub Bag - Small Loaf	1,000	18	1.00	6	11
1204	4-1/2 x 2-1/2 x 24	White MG Plain - French Bread	1,000	25	1.40	4	10
1228	4-1/2 x 2-1/2 x 28	White MG Plain - Long French Bread	1,000	30	1.60	3	11
1202	4-1/2 x 4 x 14-1/2	White MG Plain - Small Rye Size	1,000	14	0.90	7	9
1230	5 x 3 x 16	White MG Plain - Small Italian	1,000	22	1.00	7	10
1224	5 x 3 x 24	White MG Plain - Cuban	1,000	27	1.70	4	10
1218	5-1/4 x 2-3/4 x 18	White MG Plain - New York Loaf	1,000	23	1.30	4	10
1206	5-1/4 x 3-1/4 x 18	White MG Plain - Italian Bread Size	1,000	23	1.30	4	10
1210	5-1/4 x 3-1/4 x 20	White MG Plain - Large Vienna Size	1,000	25	1.30	4	10
1208	6 x 3-1/2 x 18	White MG Plain - Plain Bread Bag - Stock	1,000	26	1.30	6	7
1214	8-1/2 x 4-1/2 x 14	White MG Plain - 3# Round Loaf Size	1,000	27	1.50	9	5

Custom prints are available for all listed items . Our normal custom run requirement is 25,000 bags. Prints of over 4 colors or of elaborate design have a 100,000 bag minimum.

Please see page 5 for generic natural kraft bags.

PRINTED BREAD BAGS

White MG and/or Natural uncoated bread bags are ideal for artisan and other crispy crust breads. Foil garlic bread bags are perfect for re-heating in the oven - **NOT THE MICROWAVE** - at home.



ITEM#	SIZE	DESCRIPTION	PACK PER CASE	CS. WT.	CS. CUBE	TI	HI
13A24	3-1/2 x 2 x 24	White Baguette Bread Bag - Bakery Fresh Design	1,000	22	1.50	6	10
13A02	4-1/2 x 2-1/2 x 24	White French Bread Bag - Bakery Fresh Design	1,000	25	1.40	4	10
13A04	4-1/2 x 2-1/2 x 28	White French Bread Bag - Bakery Fresh Design	1,000	30	1.60	3	11
1224-P	5 x 3 x 24	White Cuban Bread Bag - Cuban Bread - Stock	1,000	27	1.70	4	10
13A22	5-1/4 x 3-1/4 x 22	White French Bread Bag - Bakery Fresh Design	1,000	36	1.80	4	10
13A08	5-1/4 x 3-1/4 x 16	White Italian Bread Bag - Bakery Fresh Design	1,000	22	1.00	6	7
13A06	5-1/4 x 3-1/4 x 18	White Italian Bread Bag - Bakery Fresh Design	1,000	23	1.30	4	10
13A00	5-1/4 x 3-1/4 x 20	White French Bread Bag - Bakery Fresh Design	1,000	33	1.30	4	10
13A10	5-1/4 x 3-1/4 x 20	White Italian Bread Bag - Bakery Fresh Design	1,000	25	1.50	4	10
13A20	5-1/4 x 3-1/4 x 20	White French Bread Bag - Bakery Fresh Design	1,000	27	1.50	4	10
13A02-NK	4-1/2 x 2-1/2 x 24	Wheat Generic Design - Natural Printed	1,000	30	1.60	4	10
13A04-NK	4-1/2 x 2-1/2 x 28	Wheat Generic Design - Natural Printed	1,000	30	1.60	3	11
13A20-NK	5-1/4 x 3-1/4 x 20	Wheat Generic Design - Natural Printed	1,000	27	1.50	4	10
13A22-NK	5-1/4 x 3-1/4 x 22	Wheat Generic Design - Natural Printed	1,000	31	1.80	4	10
13A24-NK	3-1/2 x 2 x 24	Wheat Generic Design - Natural Printed	1,000	22	1.50	4	10

FOIL GARLIC BREAD BAGS



1304	4-1/2 x 2-1/4 x 20	Foil Printed - Bakery Fresh" - Garlic Bread"	500	16	0.7	7	10
1306	5-1/4 x 3 x 20	Foil Printed - Bakery Fresh" - Garlic Bread"	500	19	0.8	7	10

Custom prints are available for all listed items . Our normal custom run requirement is 25,000 bags. Prints of over 4 colors or of elaborate design have a 100,000 bag minimum.

NATURAL ARTISAN PANEL BAGS

Brown Natural Kraft Panel Bags feature a rigid polyester panel resistant to "zippering". This panel, unlike others, holds its shape rather than conforming to and suffocating the loaf. The resulting airflow combined with the breathable - unwaxed - natural kraft paper creates a uniformly crispy crust - all the time. For maximum visibility ask about our corner panel bag option.



ITEM#	SIZE	DESCRIPTION	PACK PER CASE	CS. WT.	CS. CUBE	TI	HI
12P07	5-1/4 x 1-1/2 x 7	Plain - Cookie Bag	2,000	13	0.78	8	4
12P13	7 x 3 x 12-3/4	Wheat Generic Design - Nat Small Rotondo	1,000	21	1.40	9	6
12P14	8-1/2 x 4-1/2 x 14	Wheat Generic Design - Nat Large Rotondo	1,000	28	1.50	10	5
12P18	6 x 2-1/2 x 18	Wheat Generic Design - Nat. Baguette	1,000	24	1.80	6	7
12P18-CP	6 X 2-1/2 X 18	Wheat Generic Design - Nat. Kraft CORNER PANEL	1,000	24	1.80	6	7
12P19	7 x 2-1/2 x 18	Wheat Generic Design - Nat Kraft	1,000	27	1.80	7	4
12P21	6-1/2 X 3 X 21	Wheat Generic Design - Nat Kraft	1,000	27	1.80	7	4
12P22	5-1/4 x 3-1/4 x 22	Wheat Generic Design - Nat. Baguette	1,000	30	1.80	6	7
12P23	3-1/2 x 2 x 24	Wheat Generic Design - Nat. Baguette	1,000	22	1.50	4	10
12P24	4-1/2 x 2 x 24	Wheat Generic Design - Nat. French Bread	1,000	26	1.40	4	10
12P25	5-1/4 x 3-1/4 x 25	Wheat Generic Design - Natural Kraft Long Italian	1,000	32	1.54	3	8
12P26	4-1/2 x 2 x 26	Wheat Generic Design - Nat. Baguette Long Baguette	1,000	27	1.50	3	11
12P27	3-1/2 x 2 x 26	Wheat Generic Design - Nat. Baguette Long Baguette	1,000	28	1.50	3	11
12P28	4-1/2 x 2 x 28	Wheat Generic Design - Nat. Baguette Long French	1,000	30	1.50	3	11
12P35	4-1/2 X 2 X 35	Wheat Generic Design - Nat. Baguette Extra Long	500	19	1.30	3	11

Custom prints are available for all listed items . Our normal custom run requirement is 25,000 bags. Prints of over 4 colors or of elaborate design have a 100,000 bag minimum.

WAXSEAL™ AUTOMATIC BAKERY BAGS

Waxseal™ waxed paper "Self Opening Style" or "SOS" bags are still the best package for a doughnut or pastry. The wax coating gives a freshness barrier and increases shelf life. It does not suffocate the product as plastic does, nor does it cause chocolate or sugar glaze smearing.



ITEM#	SIZE	DESCRIPTION	PACK PER CASE	CS. WT.	CS. CUBE	TI	HI
1413	4# (5 x 3-3/8 x 9-5/8)	Plain - White	1,000	19	0.80	7	10
1417	6# (6 x 3-1/2 x 11-3/16)	Plain - White	1,000	24	1.00	9	5
1419	8# (6-1/8 x 3-7/8 x 12-1/4)	Plain - White	1,000	30	1.50	9	4
1421	10# (6-5/8 x 4 x 13-1/8)	Plain - White	1,000	32	1.50	9	4
1423	12# (7-1/8 x 4-1/4 x 13-15/16)	Plain - White	1,000	35	1.70	9	4
1401-BNK	4# (5 x 3-3/8 x 9-5/8)	Wheat Generic Design - Natural Printed	1,000	19	0.80	7	10
1405-BNK	6# (6 x 3-1/2 x 11-3/16)	Wheat Generic Design - Natural Printed	1,000	24	1.00	9	4
1407-BNK	8# (6-1/8 x 3-7/8 x 12-1/4)	Wheat Generic Design - Natural Printed	1,000	30	1.50	9	4
1409-BNK	10# (6-5/8 x 4 x 13-1/8)	Wheat Generic Design - Natural Printed	1,000	32	1.50	9	4
1411-BNK	12# (7-1/8 x 4-1/4 x 13-15/16)	Wheat Generic Design - Natural Printed	1,000	35	1.70	9	4
1401	4# (5 x 3-3/8 x 9-5/8)	Printed - Color Coded - Blue	1,000	19	0.80	7	10
1403	5# (5-1/2 x 3-1/4 x 11-1/8)	Printed - Color Coded - Mauve	1,000	22	0.80	7	9
1405	6# (6 x 3-1/2 x 11-3/16)	Printed - Color Coded - Teal	1,000	24	1.00	9	5
1407	8# (6-1/8 x 3-7/8 x 12-1/4)	Printed - Color Coded - Red	1,000	30	1.50	9	4
1409	10# (6-5/8 x 4 x 13-1/8)	Printed - Color Coded - Orange	1,000	32	1.50	9	4
1411	12# (7-1/8 x 4-1/4 x 13-15/16)	Printed - Color Coded - Burgundy	1,000	35	1.70	9	4
1401-A	4# (5 x 3-3/8 x 9-5/8)	Printed - Fresh Baked - Red And Blue	1,000	19	0.80	7	10
1405-A	6# (6 x 3-1/2 x 11-3/16)	Printed - Fresh Baked - Red And Blue	1,000	24	1.00	9	5
1407-A	8# (6-1/8 x 3-7/8 x 12-1/4)	Printed - Fresh Baked - Red And Blue	1,000	30	1.50	9	5
1409-A	10# (6-5/8 x 4 x 13-1/8)	Printed - Fresh Baked - Red And Blue	1,000	32	1.50	9	4
1411-A	12# (7-1/8 x 4-1/4 x 13-15/16)	Printed - Fresh Baked - Red And Blue	1,000	35	1.70	9	4
1401-B	4# (5 x 3-3/8 x 9-5/8)	Printed - Bakery Fresh - Teal, Brown, Red	1,000	19	0.80	7	10
1405-B	6# (6 x 3-1/2 x 11-3/16)	Printed - Bakery Fresh - Teal, Brown, Red	1,000	24	1.00	9	4
1407-B	8# (6-1/8 x 3-7/8 x 12-1/4)	Printed - Bakery Fresh - Teal, Brown, Red	1,000	30	1.50	9	5
1409-B	10# (6-5/8 x 4 x 13-1/8)	Printed - Bakery Fresh - Teal, Brown, Red	1,000	32	1.50	9	4
1411-B	12# (7-1/8 x 4-1/4 x 13-15/16)	Printed - Bakery Fresh - Teal, Brown, Red	1,000	35	1.70	9	4

Custom prints are available for all listed items. Our normal custom run requirement is 25,000 bags. Prints of over 4 colors or of elaborate design have a 100,000 bag minimum.

CARRY OUT SACKS & SCHOOL LUNCH BAGS

Brown uses only the best quality papers for our HAN-D-PAK™ Carry Out Sacks. Renewable virgin pulp ensures good strength and performance. Our bags are neither banded or bundled. They are boxed for better handling, cleaner storage, and less waste. WAXSEAL™ school lunch bags preserve freshness.



ITEM#	SIZE	PACK PER CASE	CS. WT.	CS. CUBE	TI	HI
1601	Bleached Kraft Sack 1# Size	2,000	17	1.00	10	5
1602	Bleached Kraft Sack 2# Size	2,000	21	1.30	10	4
1603	Bleached Kraft Sack 3# Size	2,000	23	1.40	10	4
1604	Bleached Kraft Sack 4# Size	1,000	17	0.80	9	4
1606	Bleached Kraft Sack 6# Size	1,000	23	1.00	9	4
1608	Bleached Kraft Sack 8# Size	1,000	25	1.50	6	4
1610	Bleached Kraft Sack 10# Size	1,000	29	1.50	6	4
1612	Bleached Kraft Sack 12# Size	500	16	7.50	9	5
1616	Bleached Kraft Sack 16# Size	500	24	8.40	6	7
16G4	Grease Resistant Sack 4# Size	1,000	16	0.80	9	5
16G6	Grease Resistant Sack 6# Size	500	11	1.00	8	9
16G8	Grease Resistant Sack 8# Size	500	12.5	1.50	6	4
16G10	Grease Resistant Sack 10# Size	500	14	1.50	9	4
16G12	Grease Resistant Sack 12# Size	500	16	7.50	9	4
1601-NK	Natural Kraft Sack 1# Size	2,000	17	1.00	10	5
1602-NK	Natural Kraft Sack 2# Size	2,000	21	1.30	10	4
1603-NK	Natural Kraft Sack 3# Size	2,000	23	1.40	10	4
1604-NK	Natural Kraft Sack 4# Size	1,000	17	0.80	9	4
1606-NK	Natural Kraft Sack 6# Size	1,000	23	1.00	9	4
1608-NK	Natural Kraft Sack 8# Size	1,000	25	1.50	6	4
1610-NK	Natural Kraft Sack 10# Size	1,000	29	1.50	9	4
1612-NK	Natural Kraft Sack 12# Size	500	16	7.50	9	4
1616-NK	Natural Kraft Sack 16# Size	500	24	8.40	6	7

SCHOOL LUNCH BAGS

6A05	6# Waxseal - Don't Skip Lunch	1,000	22	0.80	9	5
6A05-K	6# Waxseal - Kid's Design	1,000	21	0.80	9	5
6A06	6# White Kraft - School Lunch	1,000	24	1.00	9	5
6A06-NK	6# Natural Waxseal - School Lunch	1,000	24	1.00	9	5

Custom prints are available for all listed items. Our normal custom run requirement is 25,000 bags. Prints of over 4 colors or of elaborate design have minimum.

Please see page 8 for SOS Style Waxseal™ bakery bags.

COFFEE / CANDY DUPLEX AUTOMATIC BAGS

Brown is pleased to supply you duplex bags with tin-ties and / or windows for upscale food packaging in both white and natural papers. These bags are ideal containers for coffee, candies, seasonings, mixes, and cookies. Personalize your bag with a label or custom print.



COFFEE BAGS

ITEM#	SIZE	DESCRIPTION	PACK PER CASE	CS. WT.	CS. CUBE	TI	HI
1720	3-3/8 x 2-1/2 x 7-3/4	- No Tin Tie - 1/2# Size - Whole Bean	1,000	17	1.00	10	4
1730	3-3/8 x 2-1/2 x 7-3/4	- Tin Tie - 1/2# Size - Whole Bean	1000	18	1.00	10	4
1721	3-3/8 x 2-1/2 x 9-3/8	- No Tin Tie - L1# Size - Ground	1,000	21	1.20	10	4
1731	3-3/8 x 2-1/2 x 9-3/8	- Tin Tie - L1# Size - Ground	1000	22	1.20	10	4
1732	3-3/8 x 2-1/2 x 10-3/4	- Tin Tie - XL1# Size - Ground	1,000	25	1.40	7	5
1733	4-1/4 x 2-1/2 x 9-3/4	- Tin Tie - 1# Size - Whole Bean	1000	26	1.30	7	4
1740	3-3/8 x 2-1/2 x 7-3/4	- Natural No Tin Tie -1/2# Size - Whole Bean	1,000	14	1.00	10	4
1750	3-3/8 x 2-1/2 x 7-3/4	- Natural Tin Tie - 1/2# Size - Whole Bean	1,000	15	1.00	10	4
1741	3-3/8 x 2-1/2 x 9-3/8	- Natural No Tin Tie -L1# Size - Ground	1,000	16	1.20	10	4
1751	3-3/8 x 2-1/2 x 9-3/8	- Natural Tin Tie - L1# Size - Ground	1,000	18	1.20	10	4
1742	4-1/4 x 2-1/2 x 9-3/4	- Natural No Tin Tie -1# Size - Whole Bean	1,000	21	1.30	10	4
1752	4-1/4 x 2-1/2 x 9-3/4	- Natural Tin Tie - 1# Size - Whole Bean	1,000	22	1.30	6	4
1744	4-3/4 x 3 x 11-1/2	- Natural No Tin Tie -2# Size	1,000	28	2.10	6	4
1754	4-3/4 x 3 x 11-1/2	- Natural Tin Tie - 2# Size	1,000	29	2.10	6	4
1745	6-1/2 x 4 x 16-1/8	- Natural No Tin Tie -5# Size	500	29	2.00	6	4
1755	6-1/2 x 4 x 16-1/8	- Natural Tin Tie - 5# Size	500	30	2.00	6	4

COOKIE AND CANDY BAGS

1500	3-3/8 x 2-1/2 x 9-3/8	Tin Tie Window - Small Size - Red Pin Striped	500	12	0.50	9	5
1501	4-3/4 x 2-1/2 x 9-1/2	Tin Tie Window - 1# Size - Red Pin Striped	500	30	0.80	9	5
1502	4-3/4 x 2-1/2 x 9-1/2	Tin Tie Window - 1# Size - Plain White	500	30	0.80	9	5
1504	6 x 2-3/4 x 9-1/2	Tin Tie Window - 1-1/2# Size - Plain White	500	36	1.00	9	5
1749	4.75 x 2-1/2 x 9-1/2	Natural Tin Tie Window - 1# Size - Plain	1,000	24	1.76	6	4
1759	6 x 2-3/4 x 9-1/2	Natural Tin Tie Window - 1-1/2# Size - Plain	500	27	1.76	9	4

Custom prints are available for all listed items. Our normal custom run requirement is 25,000 bags. Prints of over 4 colors or of elaborate design have a 100,000 bag minimum.

A LA CARTE CARRY-OUT DELI BAGS

Less expensive than boxes, vented "A La Carte" bags are resistant to both grease and moisture. They are excellent packages for hot deli items.



ITEM#	SIZE	DESCRIPTION	PACK PER CASE	CS. WT.	CS. CUBE	TI	HI
1904	4# (5 x 3-3/8 x 9-5/8)	Greaseproof - A La Carte Deli Bags	500	13	0.00	7	10
1906	6# (6 x 3-1/2 x 11-3/16)	Greaseproof - A La Carte Deli Bags	500	16	1.00	9	5
1908	8# (6-1/8 x 3-7/8 x 12-1/4)	Greaseproof - A La Carte Deli Bags	500	20	1.34	9	5
1903	5-1/2 x 3-1/4 x 8-5/8	Duplex Greaseproof - A La Carte Deli Bags	500	14	0.90	6	4
1903-T	5-1/2 x 3-1/4 x 8-5/8	Duplex Greaseproof - A La Carte Deli Bags	500	16	0.90	6	4
1905	8-1/4 x 5-1/4 x 8-3/4	Duplex Greaseproof - A La Carte Deli Bags	250	17	1.20	6	4
1905-T	8-1/4 x 5-1/4 x 8-3/4	Duplex Greaseproof - A La Carte Deli Bags	250	20	1.20	7	5
1907	8-1/4 x 5-1/4 x 10-3/4	Duplex Greaseproof - A La Carte Deli Bags	250	22	1.20	6	4
1907-T	8-1/4 x 5-1/4 x 10-3/4	Duplex Greaseproof - A La Carte Deli Bags	250	24	1.20	9	5
1909	8-1/4 x 5-1/4 x 12	Duplex Greaseproof - A La Carte Deli Bags	250	26	1.40	6	4
1909-T	8-1/4 x 5-1/4 x 12	Duplex Greaseproof - A La Carte Deli Bags	250	29	1.40	7	5
1915	8-1/4 x 5-1/4 x 15	Tortilla Chips - Natural Kraft Window Bag	250	20	1.59	6	7

FOIL PINCHBOTTOM THERMAL BAGS

Traditional foil / paper laminated bags retain heat or cold as desired. They are excellent packages for rewarming items in the oven at home

NO MICROWAVES PLEASE !

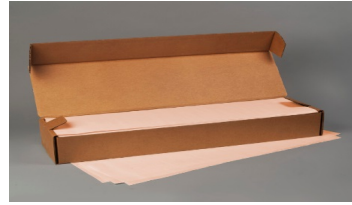
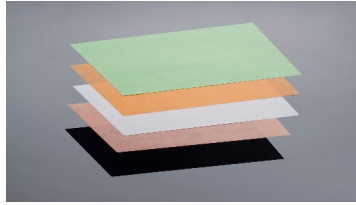


5B32	4 x 3 x 10-1/2	Foil In - Thermal Bag Pint Size "Superhot"	1,000	19	0.90	10	6
5B34	5 x 3-3/4 x 12	Foil In - Thermal Bag Quart Size "Superhot"	500	16	1.20	9	10
5B36	6-1/2 x 4-3/8 x 14	Foil In - Thermal Bag 1/2 Gallon Size "Superhot"	500	21	1.00	10	6
5B14	4 x 3 x 10-1/2	Foil In - Thermal Bag Pint Size Plain	1,000	19	1.40	10	8
5B16	5 x 3-3/4 x 12	Foil In - Thermal Bag Quart Size Plain	500	16	1.40	9	10
5B18	6-1/2 x 4-3/8 x 14	Foil In - Thermal Bag 1/2 Gallon Size Plain	500	21	1.70	10	6
5B08	4 x 3 x 10-1/2	Foil Out - Thermal Bag Pint Size Plain	1,000	19	1.40	10	6
5B10	5 x 3-3/4 x 12	Foil Out - Thermal Bag Quart Size Plain	500	32	1.20	9	10
5B12	6-1/2 x 4-3/8 x 14	Foil Out - Thermal Bag 1/2 Gallon Size Plain	500	21	1.70	10	6
5B26	4 x 3 x 10-1/2	Foil In - Chinese Take Out Pint Size Printed	1,000	19	0.90	9	5
5B40	6-1/2 x 4 x 20	Foil In - Ribs To Go Bag Printed	250	15	0.80	10	8

Custom prints are available for all listed items. Our normal custom run requirement is 25,000 bags. Prints of over 4 colors or of elaborate design have a

WET-STRENGTH STEAK PAPER SHEETS

These durable sheets provide excellent display characteristics. They maintain bright color and wick off excess juices to best market steaks and other meats for store display. Durable wet-strength paper prevents ripping. Color varieties allow for better inventory management - rotating the display sheets keyed by color.



ITEM#	SIZE	DESCRIPTION	PACK PER CASE	CS. WT.	CS. CUBE	TI	HI
5100	30 x 6	40# High Wet Strength - Green	1,000	17	0.41	6	11
5101	30 x 8	40# High Wet Strength - Green	1,000	23	0.55	5	11
5102	12 x 9	40# High Wet Strength - Green	1,000	11	0.30	15	10
5103	30 x 9	40# High Wet Strength - Green	1,000	27	0.62	5	10
5104	14 x 10	40# High Wet Strength - Green	1,000	14	0.33	10	10
5105	30 x 10	40# High Wet Strength - Green	1,000	29	0.68	4	11
5106	18 x 12	40# High Wet Strength - Green	1,000	21	0.49	7	10
5107	24 x 12	40# High Wet Strength - Green	1,000	28	0.65	4	10
5108	30 x 12	40# High Wet Strength - Green	1,000	34	0.82	4	11
5109	30 x 6	40# High Wet Strength - Peach	1,000	18	0.41	6	11
5110	30 x 8	40# High Wet Strength - Peach	1,000	23	0.55	5	11
5111	12 x 9	40# High Wet Strength - Peach	1,000	11	0.30	15	10
5112	30 x 9	40# High Wet Strength - Peach	1,000	26	0.62	5	10
5113	14 x 10	40# High Wet Strength - Peach	1,000	14	0.33	10	10
5114	30 x 10	40# High Wet Strength - Peach	1,000	29	0.68	4	11
5115	18 x 12	40# High Wet Strength - Peach	1,000	21	0.49	7	10
5116	24 x 12	40# High Wet Strength - Peach	1,000	28	0.65	4	10
5117	26 x 12	40# High Wet Strength - Peach	1,000	30	0.71	1	1
5118	30 x 12	40# High Wet Strength - Peach	1,000	34	0.82	4	10
5119	24 x 18	40# High Wet Strength - Peach	1,000	40	0.99	1	1
5120	30 x 6	40# High Wet Strength - White	1,000	17	0.41	6	11
5121	30 x 8	40# High Wet Strength - White	1,000	23	0.55	4	11
5122	12 x 9	40# High Wet Strength - White	1,000	11	0.30	15	10
5123	14 x 10	40# High Wet Strength - White	1,000	14	0.33	8	10
5124	30 x 10	40# High Wet Strength - White	1,000	29	0.68	4	11
5125	18 x 12	40# High Wet Strength - White	1,000	21	0.49	7	10
5126	24 x 12	40# High Wet Strength - White	1,000	28	0.65	4	12
5127	30 x 12	40# High Wet Strength - White	1,000	34	0.82	3	5
5128	30 x 9	40# High Wet Strength - White	1,000	26	0.62	5	10
5129	30 x 6	40# High Wet Strength - Pink	1,000	17	0.41	6	11
5130	30 x 8	40# High Wet Strength - Pink	1,000	23	0.55	5	11
5131	12 x 9	40# High Wet Strength - Pink	1,000	11	0.30	15	10
5132	30 x 9	40# High Wet Strength - Pink	1,000	36	0.62	5	10
5133	14 x 10	40# High Wet Strength - Pink	1,000	14	0.33	10	10
5134	26 x 10	40# High Wet Strength - Pink	1,000	26	0.59	1	1
5135	30 x 10	40# High Wet Strength - Pink	1,000	29	0.68	4	11
5136	18 x 12	40# High Wet Strength - Pink	1,000	21	0.49	7	10
5137	24 x 12	40# High Wet Strength - Pink	1,000	28	0.65	4	10
5138	30 x 12	40# High Wet Strength - Pink	1,000	34	0.82	3	5
5139	30 x 6	40# High Wet Strength - Black	1,000	18	0.41	6	11
5140	30 x 8	40# High Wet Strength - Black	1,000	23	0.55	5	11
5141	12 x 9	40# High Wet Strength - Black	1,000	11	0.30	15	10
5142	30 x 10	40# High Wet Strength - Black	1,000	28	0.68	4	11
5143	30 x 12	40# High Wet Strength - Black	1,000	34	0.82	3	5
5144	14 x 10	40# High Wet Strength - Black	1,000	14	0.33	8	10

Please see page 11 for Steak Paper Rolls.

Please see page 13 for Market Papers (including Pink) and Butcher Paper options.

STEAK PAPER ROLLS

These Steak Paper Rolls are made of premium WET-STRENGTH colored papers to absorb excess fluids and enhance the display properties of many fresh cut meats. Rolls are available in WHITE, BLACK, GREEN, PEACH, and PINK, in a range of roll widths.

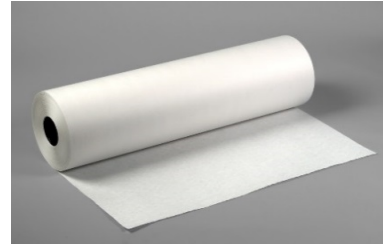


ITEM#	SIZE	DESCRIPTION	PACK PER CASE	CS. WT.	CS. CUBE	TI	HI
5200	1,200' long 12 "wide	Green Steak Paper Rolls 40# High Wet Strength	1 ROLL	13	0.50	30	2
5201	1,200' long 15 "wide	Green Steak Paper Rolls 40# High Wet Strength	1 ROLL	17	0.63	30	2
5202	1,200' long 18 "wide	Green Steak Paper Rolls 40# High Wet Strength	1 ROLL	20	0.75	30	2
5203	1,200' long 20 "wide	Green Steak Paper Rolls 40# High Wet Strength	1 ROLL	22	0.84	30	2
5204	1,200' long 24 "wide	Green Steak Paper Rolls 40# High Wet Strength	1 ROLL	27	1.00	30	2
5231	1,200' long 30 "wide	Green Steak Paper Rolls 40# High Wet Strength	1 ROLL	40	1.00	5	5
5205	1,200' long 12 "wide	Pink Steak Paper Rolls 40# High Wet Strength	1 ROLL	16	0.50	30	2
5206	1,200' long 15 "wide	Pink Steak Paper Rolls 40# High Wet Strength	1 ROLL	17	0.63	30	2
5207	1,200' long 18 "wide	Pink Steak Paper Rolls 40# High Wet Strength	1 ROLL	20	0.75	30	2
5208	1,200' long 20 "wide	Pink Steak Paper Rolls 40# High Wet Strength	1 ROLL	22	0.84	30	2
5209	1,200' long 24 "wide	Pink Steak Paper Rolls 40# High Wet Strength	1 ROLL	27	1.00	30	2
5210	1,200' long 12 "wide	Peach Steak Paper Rolls 40# High Wet Strength	1 ROLL	16	0.50	30	2
5211	1,200' long 15 "wide	Peach Steak Paper Rolls 40# High Wet Strength	1 ROLL	17	0.63	30	2
5212	1,200' long 18 "wide	Peach Steak Paper Rolls 40# High Wet Strength	1 ROLL	20	0.75	30	2
5213	1,200' long 20 "wide	Peach Steak Paper Rolls 40# High Wet Strength	1 ROLL	22	0.84	30	2
5214	1,200' long 24 "wide	Peach Steak Paper Rolls 40# High Wet Strength	1 ROLL	27	1.00	30	2
5215	1,200' long 12 "wide	White Steak Paper Rolls 40# High Wet Strength	1 ROLL	16	0.50	30	2
5216	1,200' long 15 "wide	White Steak Paper Rolls 40# High Wet Strength	1 ROLL	17	0.63	30	2
5217	1,200' long 18 "wide	White Steak Paper Rolls 40# High Wet Strength	1 ROLL	21	0.75	30	2
5218	1,200' long 20 "wide	White Steak Paper Rolls 40# High Wet Strength	1 ROLL	26	0.84	30	2
5219	1,200' long 24 "wide	White Steak Paper Rolls 40# High Wet Strength	1 ROLL	28	1.00	30	2
5235	1,200' long 30 "wide	Black Steak Paper Rolls 40# High Wet Strength	1 ROLL	40	1.00	5	5

Please see page 10 for Steak Paper Sheets

WHITE BUTCHER & TABLE COVER ROLLS

Brown Economy Table Cover Rolls are made of wet strength paper to resist ripping, maintain integrity, and make restaurant clean up easier. Brown True Butcher Rolls are made of paper with added tear strength and hold-out properties (for blood and water). All sheets are FDA approved for direct food contact.

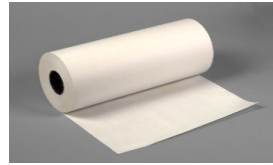


ITEM#	SIZE	DESCRIPTION	PACK PER CASE	CS. WT.	CS. CUBE	TI	HI
5015-EC	800' long 15" wide	40# Economy Table Cover Rolls	1 ROLL	14	0.50	30	2
5015-ECB	800' long 15" wide	40# Economy Table Cover Rolls - Boxed	1 ROLL	13	0.50	30	2
5018-EC	800' long 18" wide	40# Economy Table Cover Rolls	1 ROLL	17	0.60	30	2
5020-EC	800' long 20" wide	40# Economy Table Cover Rolls	1 ROLL	18	0.67	30	2
5024-EC	800' long 24" wide	40# Economy Table Cover Rolls	1 ROLL	22	0.80	30	2
5030-EC	800' long 30" wide	40# Economy Table Cover Rolls	1 ROLL	28	1.00	5	5
5036-EC	800' long 36" wide	40# Economy Table Cover Rolls	1 ROLL	32	1.20	5	5
5912	900' long 12" wide	40# Economy Table Cover Rolls	1 ROLL	12	0.44	30	2
5915	900' long 15" wide	40# Economy Table Cover Rolls	1 ROLL	15	0.54	30	3
5918	900' long 18" wide	40# Economy Table Cover Rolls	1 ROLL	18	0.65	30	2
5920	900' long 20" wide	40# Economy Table Cover Rolls	1 ROLL	20	0.73	30	2
5924	900' long 24" wide	40# Economy Table Cover Rolls	1 ROLL	24	0.87	30	2
5930	900' long 30" wide	40# Economy Table Cover Rolls	1 ROLL	30	1.09	5	5
5936	900' long 36" wide	40# Economy Table Cover Rolls	1 ROLL	36	1.31	5	5
5948	900' long 48" wide	40# Economy Table Cover Rolls	1 ROLL	48	1.74	5	5
5960	900' long 60" wide	40# Economy Table Cover Rolls	1 ROLL	60	2.18	5	5
5012	1000' long 12" wide	40# Economy Table Cover Rolls	1 ROLL	13	0.50	30	2
5015	1000' long 15" wide	40# Economy Table Cover Rolls	1 ROLL	17	0.63	30	2
5015-B	1000' long 15" wide	40# Economy Table Cover Rolls - Boxed	1 ROLL	17	0.63	30	2
5018	1000' long 18" wide	40# Economy Table Cover Rolls	1 ROLL	20	0.75	25	2
5020	1000' long 20" wide	40# Economy Table Cover Rolls	1 ROLL	22	0.84	30	2
5020-B	1000' long 20" wide	40# Economy Table Cover Rolls - Boxed	1 ROLL	22	0.84	30	2
5024	1000' long 24" wide	40# Economy Table Cover Rolls	1 ROLL	27	1.00	30	2
5024-B	1000' long 24" wide	40# Economy Table Cover Rolls - Boxed	1 ROLL	27	1.00	30	2
5030	1000' long 30" wide	40# Economy Table Cover Rolls	1 ROLL	33	1.25	5	5
5030-B	1000' long 30" wide	40# Economy Table Cover Rolls - Boxed	1 ROLL	33	1.18	5	5
5036	1000' long 36" wide	40# Economy Table Cover Rolls	1 ROLL	40	1.51	5	5
5036-B	1000' long 36" wide	40# Economy Table Cover Rolls - Boxed	1 ROLL	41	1.42	5	5
5048	1000' long 48" wide	40# Economy Table Cover Rolls	1 ROLL	54	2.01	5	5
5060	1000' long 60" wide	40# Economy Table Cover Rolls	1 ROLL	66	2.51	5	5
5018-B	1000' long 18" wide	40# Economy Table Cover Rolls	1 ROLL	20	0.75	30	2
5015-WC	1300' long 15" wide	40# Economy Table Cover Rolls	1 ROLL	22	0.73	30	2
5018-WC	1300' long 18" wide	40# Economy Table Cover Rolls	1 ROLL	27	0.87	30	2
5020-WC	1300' long 20" wide	40# Economy Table Cover Rolls	1 ROLL	30	0.97	30	2
5024-WC	1300' long 24" wide	40# Economy Table Cover Rolls	1 ROLL	35	1.16	30	2
5030-WC	1300' long 30" wide	40# Economy Table Cover Rolls	1 ROLL	44	1.45	5	5
5036-WC	1300' long 36" wide	40# Economy Table Cover Rolls	1 ROLL	53	1.74	1	20
5012-A	1000' long 12" wide	40# Premium True Butcher Paper Rolls	1 ROLL	14	0.48	30	2
5015-A	1000' long 15" wide	40# Premium True Butcher Paper Rolls	1 ROLL	17	0.60	30	2
5018-A	1000' long 18" wide	40# Premium True Butcher Paper Rolls	1 ROLL	21	0.71	30	2
5020-A	1000' long 20" wide	40# Premium True Butcher Paper Rolls	1 ROLL	23	0.79	30	2
5024-A	1000' long 24" wide	40# Premium True Butcher Paper Rolls	1 ROLL	27	0.94	30	2
5030-A	1000' long 30" wide	40# Premium True Butcher Paper Rolls	1 ROLL	34	1.18	5	5
5036-A	1000' long 36" wide	40# Premium True Butcher Paper Rolls	1 ROLL	41	1.42	5	5

Please see page 13 for Natural Kraft and other paper shade alternatives.

FREEZER ROLLS

Brown Freezer Rolls are all FDA approved for direct food contact. Select from wet strength treated white or natural base papers. Balance economy and performance by choosing from our three basis weight grades. Meat and Fish stock prints are available.



ITEM#	SIZE	DESCRIPTION	PACK PER CASE	CS. WT.	CS. CUBE	TI	HI
5318-NK	1,100' long 18" wide	Natural 35/40# Standard Grade - 4 To 6 Months	1 ROLL	22	0.84	25	2
5318-NKB	1,100' long 18" wide	Natural 35/40# Standard Grade - 4 To 6 Months	1 ROLL	22	0.84	14	4
5512-NK	900' long 12" wide	Natural 40/45# High Grade - 6 To 8 Months	1 ROLL	14	0.56	30	2
5515-NK	900' long 15" wide	Natural 40/45# High Grade - 6 To 8 Months	1 ROLL	18	0.70	30	2
5518-NK	900' long 18" wide	Natural 40/45# High Grade - 6 To 8 Months	1 ROLL	21	0.84	30	2
5524-NK	900' long 24" wide	Natural 40/45# High Grade - 6 To 8 Months	1 ROLL	28	1.13	30	2
5530-NK	900' long 30" wide	Natural 40/45# High Grade - 6 To 8 Months	1 ROLL	35	1.41	5	5
5536-NK	900' long 36" wide	Natural 40/45# High Grade - 6 To 8 Months	1 ROLL	42	1.69	5	5
5312	1100' long 12" wide	White 35/40# Standard Grade - 4 To 6 Months	1 ROLL	15	0.56	30	2
5315	1,100' long 15" wide	White 35/40# Standard Grade - 4 To 6 Months	1 ROLL	19	0.70	30	2
5318	1,100' long 18" wide	White 35/40# Standard Grade - 4 To 6 Months	1 ROLL	22	0.84	25	2
5318-F	1,100' long 18" wide	Printed Fish 35/40# Standard Grade - 4 To 6 Months	1 ROLL	22	0.84	30	2
5318-FB	1,100' long 18" wide	Printed Fish 35/40# Standard Grade - 4 To 6 Months Boxed	1 ROLL	22	0.84	30	2
5318-M	1,100' long 18" wide	Printed Meat 35/40# Standard Grade - 4 To 6 Months	1 ROLL	22	0.84	30	2
5320	1,100' long 20" wide	White 35/40# Standard Grade - 4 To 6 Months	1 ROLL	25	0.94	30	2
5324	1,100' long 24" wide	White 35/40# Standard Grade - 4 To 6 Months	1 ROLL	30	1.13	30	2
5330	1,100' long 30" wide	White 35/40# Standard Grade - 4 To 6 Months	1 ROLL	37	1.41	5	5
5336	1,100' long 36" wide	White 35/40# Standard Grade - 4 To 6 Months	1 ROLL	44	1.69	5	5
5348	1,100' long 48" wide	White 35/40# Standard Grade - 4 To 6 Months	1 ROLL	60	2.25	5	5
5360	1,100' long 60" wide	White 35/40# Standard Grade - 4 To 6 Months	1 ROLL	74	2.81	5	5
5512	1,100' long 12" wide	White 40/45# High Grade - 6 To 8 Months	1 ROLL	17	0.51	30	2
5515	1,100' long 15" wide	White 40/45# High Grade - 6 To 8 Months	1 ROLL	21	0.63	30	2
5515-B	1,100' long 15" wide	White 40/45# High Grade - 6 To 8 Months Boxed	1 ROLL	21	0.63	30	2
5515-M	1,100' long 15" wide	Printed Meat 40/45# High Grade - 6 To 8 Months	1 ROLL	21	0.63	30	2
5518	1,100' long 18" wide	White 40/45# High Grade - 6 To 8 Months	1 ROLL	25	0.76	30	2
5518-B	1,100' long 18" wide	White 40/45# High Grade - 6 To 8 Months Boxed	1 ROLL	25	0.76	30	2
5518-M	1,100' long 18" wide	Printed Meat 40/45# High Grade - 6 To 8 Months	1 ROLL	25	0.76	30	2
5520	1,100' long 20" wide	White 40/45# High Grade - 6 To 8 Months	1 ROLL	28	0.85	30	2
5524	1,100' long 24" wide	White 40/45# High Grade - 6 To 8 Months	1 ROLL	33	1.02	30	2
5524-B	1,100' long 24" wide	White 40/45# High Grade - 6 To 8 Months Boxed	1 ROLL	33	1.02	30	2
5530	1,100' long 30" wide	White 40/45# High Grade - 6 To 8 Months	1 ROLL	42	1.27	5	5
5536	1,100' long 36" wide	White 40/45# High Grade - 6 To 8 Months	1 ROLL	50	1.52	5	5
5548	1,100' long 48" wide	White 40/45# High Grade - 6 To 8 Months	1 ROLL	66	2.03	5	5
5715	1,000' long 15" wide	White 47/54# Premium Grade - 9 To 12 Months	1 ROLL	23	0.70	30	2
5715-M	1,000' long 15" wide	Printed Meat 47/54# Premium Grade - 9 To 12 Months	1 ROLL	23	0.70	30	2
5718	1,000' long 18" wide	White 47/54# Premium Grade - 9 To 12 Months	1 ROLL	28	0.84	30	2
5718-M	1,000' long 18" wide	Printed Meat 47/54# Premium Grade - 9 To 12 Months	1 ROLL	28	0.84	25	2
5720	1,000' long 20" wide	White 47/54# Premium Grade - 9 To 12 Months	1 ROLL	30	0.94	30	2
5724	1,000' long 24" wide	White 47/54# Premium Grade - 9 To 12 Months	1 ROLL	36	1.13	30	2
5736	1,000' long 36" wide	White 47/54# Premium Grade - 9 To 12 Months	1 ROLL	54	1.69	5	5

Custom prints are available for all listed items. Our normal custom run requirement is 25,000 bags. Prints of over 4 colors or of elaborate design have a 100,000 bag minimum.

For freezer sheets please see page 14.

PATTY PAPERS, BUTCHER SHEETS & SPECIALTY ROLLS

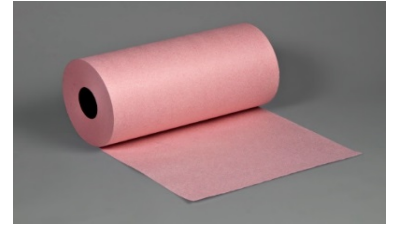
Brown offers a full line of Butcher and Freezer Sheets. These are packed to ensure ease of handling with no bundle or case weights exceeding 35 pounds. Pre-cut sheets save time for restaurants and groceries. Meat interleaving Patty Papers are made of wet-strength treated waxed paper for meat patty storage and preparation. Drilled sheets are available for specialty equipment. Bulker rolls are also available. Specialty waxed or parchment, small, pony rolls are available for bakery use.



ITEM#	SIZE	DESCRIPTION	PACK	CS. WT.	CS. CUBE	TI	HI
5412	12 x 18	40# White Butcher Sheets	1,000	21	0.49	7	10
5415	20 x 15	40# White Butcher Sheets	1,000	28	0.59	6	10
5416	15 x 24	40# White Butcher Sheets	750	25	0.98	4	15
5481	18 x 18	40# White Butcher Sheets	1,000	31	0.85	4	15
5418	18 x 24	40# White Butcher Sheets	625	25	0.98	4	15
5420	20 x 30	40# White Butcher Sheets	450	25	0.84	1	50
5424	24 x 30	40# White Butcher Sheets	375	25	0.77	2	27
5425	24 x 36	40# White Butcher Sheets	313	25	0.76	1	50
5430	30 x 30	40# White Butcher Sheets	300	25	0.76	1	50
5431	30 x 48	40# White Butcher Sheets	188	25	0.75	1	50
5432	32 x 40	40# White Butcher Sheets	210	25	0.76	1	50
5436	36 x 36	40# White Butcher Sheets	208	25	0.73	1	50
5436-NK	36 x 36	40# Natural Kraft Butcher Sheets	208	25	0.73	1	50
5442	42 x 40	40# White Butcher Sheets	160	25	0.80	1	50
WHITE FREEZER SHEETS							
5612	12 x 15	Poly Coated Freezer Sheets 35/40# 4 To 6 Month Grade	1,000	18	0.40	4	15
5615	15 x 15	Poly Coated Freezer Sheets 35/40# 4 To 6 Month Grade	1,000	22	0.49	6	15
5618	15 x 18	Poly Coated Freezer Sheets 35/40# 4 To 6 Month Grade	1,000	30	0.59	4	14
5620	20 x 20	Poly Coated Freezer Sheets 35/40# 4 To 6 Month Grade	500	19	0.87	4	16
5681	18 x 18	Poly Coated Freezer Sheets 40/45# 6 To 9 Month Grade	1,000	35	0.70	1	1
PATTY PAPERS							
7B45	4.75 x 5	Patty Paper Waxed	24 / 1,000	30	0.94	11	5
7B55	5.5 x 5.5	Patty Paper Waxed	24 / 1,000	37	1.20	11	4
7B55-8	5.5 x 5.5	Patty Paper Waxed	8 / 1,000	13	0.40	16	8
7B55-D	5.5 x 5.5	Patty Paper Waxed - Three Hole Drilled	24 / 1,000	37	1.20	11	4
7B2	6 x 6	Patty Paper Waxed	10 / 1,000	14	0.63	10	7
PONY, PARCHMENT, & BULKER ROLLS							
6000	2,600' long 12" wide	White Vegetable Parchment Roll	1 ROLL	24	0.69	30	2
6018	2600' long 18" wide	White Vegetable Parchment Roll	1 ROLL	36	0.69	30	2
6009-P	700' long 9" wide	White Vegetable Parchment Pony Roll	4 ROLLS	18	0.80	30	2
6012-P	700' long 12" wide	White Vegetable Parchment Pony Roll	4 ROLLS	28	1.12	16	4
6009-W	700' long 9" wide	White Waxed Pony Roll	4 ROLLS	18	0.80	30	2
6012-W	700' long 12" wide	White Waxed Pony Roll	4 ROLLS	20	1.00	16	4
6004-W	1650' long 4" wide	Waxed Bulker Patty Paper Roll	4 ROLLS	30	1.00	3	3
5818	900' long 18" wide	White Mg Bakery Roll	1 ROLL	22	0.74	11	16

NATURAL BUTCHER, & MARKET ROLLS

Natural Kraft papers continue to increase in restaurant popularity. Brown offers Rolls available as Restaurant Table Covers or as True Butcher. All are FDA approved for direct food contact and have enhanced wet-strength and moisture hold-out properties. In addition to these Brown now offers an expanded range of basis weights for our white and pink market papers. These include 30# and 50# sheets. Please see below. Brown can service all your market and butcher paper needs.

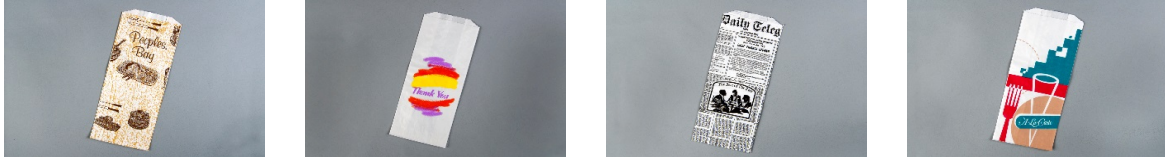


ITEM#	SIZE	DESCRIPTION	PACK PER CASE	ROLL WT.	CS. CUBE	TI	HI
5912-NK	900' long 12" wide	40# Natural Kraft Roll	1 ROLL	10	0.38	30	2
5915-NK	900' long 15" wide	40# Natural Kraft Roll	1 ROLL	13	0.47	30	2
5918-NK	900' long 18" wide	40# Natural Kraft Roll	1 ROLL	15	0.57	30	2
5920-NK	900' long 20" wide	40# Natural Kraft Roll	1 ROLL	17	0.63	30	2
5924-NK	900' long 24" wide	40# Natural Kraft Roll	1 ROLL	21	0.76	30	2
5930-NK	900' long 30" wide	40# Natural Kraft Roll	1 ROLL	26	0.95	5	5
5936-NK	900' long 36" wide	40# Natural Kraft Roll	1 ROLL	31	1.14	5	5
5948-NK	900' long 48" wide	40# Natural Kraft Roll	1 ROLL	41	1.51	5	5
5015-NK	1000' long 15" wide	40# Natural Kraft Roll	1 ROLL	17	0.63	30	2
5018-NK	1000' long 18" wide	40# Natural Kraft Roll	1 ROLL	20	0.75	30	2
5020-NK	1000' long 20" wide	40# Natural Kraft Roll	1 ROLL	22	0.84	30	2
5024-NK	1000' long 24" wide	40# Natural Kraft Roll	1 ROLL	27	1.00	30	2
5030-NK	1000' long 30" wide	40# Natural Kraft Roll	1 ROLL	33	1.25	5	5
5036-NK	1000' long 36" wide	40# Natural Kraft Roll	1 ROLL	40	1.51	5	5
7315	1,625' long 15" wide	30# White Market Paper	1 ROLL	21	0.68	30	2
7318	1,625' long 18" wide	30# White Market Paper	1 ROLL	25	0.81	30	2
7320	1,625' long 20" wide	30# White Market Paper	1 ROLL	28	0.90	30	2
7324	1,625' long 24" wide	30# White Market Paper	1 ROLL	33	1.08	30	2
7330	1,625' long 30" wide	30# White Market Paper	1 ROLL	41	1.36	5	5
7336	1,625' long 36" wide	30# White Market Paper	1 ROLL	50	1.63	5	5
7348	1,625' long 48" wide	30# White Market Paper	1 ROLL	66	2.17	5	5
74P15	1,300' long 15" wide	40# Pink Market Paper	1 ROLL	22	0.78	30	2
74P18	1,300' long 18" wide	40# Pink Market Paper	1 ROLL	26	0.93	30	2
74P20	1,300' long 20" wide	40# Pink Market Paper	1 ROLL	29	1.04	30	2
74P24	1,300' long 24" wide	40# Pink Market Paper	1 ROLL	35	1.24	30	2
7518	1,100' long 18" wide	50# White Market Paper	1 ROLL	28	0.81	30	2
7520	1,100' long 20" wide	50# White Market Paper	1 ROLL	31	0.90	30	2
7524	1,100' long 24" wide	50# White Market Paper	1 ROLL	37	1.09	30	2
7530	1,100' long 30" wide	50# White Market Paper	1 ROLL	47	1.36	5	5
7536	1,100' long 36" wide	50# White Market Paper	1 ROLL	56	1.63	5	5
7548	1,100' long 48" wide	50# White Market Paper	1 ROLL	75	2.17	5	5
75P15	1,100' long 15" wide	50# Pink Market Paper	1 ROLL	22	0.68	30	2
75P18	1,100' long 18" wide	50# Pink Market Paper	1 ROLL	26	0.81	20	3
75P20	1,100' long 20" wide	50# Pink Market Paper	1 ROLL	29	0.90	30	2
75P24	1,100' long 24" wide	50# Pink Market Paper	1 ROLL	35	1.09	30	2
75P36	1,100' long 36" wide	50# Pink Market Paper	1 ROLL	52	1.09	5	5

Please see page 12 for a full offering of 40# bleached Table Cover and Butcher Rolls.

DOGGIE & PEOPLE RESTAURANT TAKE HOME BAGS

How much is that doggie bag in the window? Call your Brown distributor and find out! Grease Resistant Duplex Carry Out bags are still the best way to bring home that unfinished steak.



ITEM#	SIZE	DESCRIPTION	PACK PER CASE	CS. WT.	CS. CUBE	TI	HI
1002	5 x 2-3/4 x 12	Printed -Traditional Doggie Bag Design	500	14	0.85	9	10
1003	5 x 2-3/4 x 12	Printed -Brigitte Basset Design	500	14	0.85	9	10
10A02	5 x 2-3/4 x 12	Printed -People Bag Design	500	14	0.85	9	10
10B02	5 x 2-3/4 x 12	Printed -Generic Thank You Design	500	14	0.85	9	10
10B04	5 x 2-3/4 x 12	Printed -Newsprint Design	500	14	0.85	9	10
10C02	5 x 2-3/4 x 12	Printed -A La Carte Design	500	14	0.85	9	10
14A2	4-14 x 2-1/2 x 10	Plain -For Pasties, Fried Shrimp	1,000	20	1.40	10	6
14A5	5 x 2-3/4 x 12	Plain -Plain Doggie Bag	500	14	0.85	9	10
14A6	6 x 3-3/8 x 14	Plain -For Chicken Or Fish	1,000	35	2.20	9	4
10W17	4-1/2 x 2-1/2 x 17	Printed -Wine Bottle Bag	1,000	16	1.00	7	9
10Y02	5 x 2-3/4 x 12	Plain -Poly Lined	1,000	27	1.40	7	9
1102	6 x 3-3/4 x 14-1/2	Printed -Fish N Chip Bag	1,000	29	1.60	9	4

CANDY & WEDDING CAKE BAGS

Single Serve White Candy Bags are available in both White MG and Glassine Lined MG styles. Our white grease resistant Frozen Cookie Bag is ideal for summer sales. Customize your bag in a 25,000 minimum.



301	4-1/4 x 6	Candy Bag - White Single Ply	10 / 1000	43	3.60	5	3
303	4-3/4 x 6-3/4	Candy Bag - 1/2# White Single Ply	10 / 1000	53	3.60	5	3
305	5-3/4 x 7-1/2	Candy Bag - White Single Ply	5 / 1000	35	2.80	8	3
307	6-3/4 x 9	Candy Bag - White Single Ply	5 / 1000	48	3.30	8	3
311	4-3/4 x 6-3/4	Duplex Candy Bag - Glassine Lined White	10 / 500	45	2.20	8	3
313	5-3/4 x 7-1/2	Duplex Candy Bag - Glassine Lined White	8 / 500	51	3.30	4	3
315	6-3/4 x 9	Duplex Candy Bag - Glassine Lined White	6 / 500	53	4.20	8	3
320	4-1/2 x 1 x 5-3/4	Cookie Bag - Ice Cream Treat Design	2,000	8	0.30	10	10
14A1	5-3/4 x 7-1/2	Printed -"Our Wedding Day" Bag	8 / 500	51	4.20	4	3

GIBLET BAGS

Giblet Bags are made of 30 pound basis weight, high wet strength paper. They safely hold giblets inside poultry and do not degrade.

402	5 x 1-1/2 x 8	Giblet Bag - Wet Strength White Paper	5 / 1000	42	3.30	5	3
407	5 x 6	Giblet Bag - Wet Strength White Paper	10 / 1000	50	3.60	5	3
409	5 x 7	Giblet Bag - Wet Strength White Paper	10 / 1000	58	3.60	4	3

Custom prints are available for all listed items. Our normal custom run requirement is 25,000 bags. Prints of over 4 colors or of elaborate design have a 100,000 bag minimum.

NAPKIN RING BANDS

Brown has as full selection of Napkin Band colors and sizes for your needs. Our convenient small pack (5,000 bands per carton) is preferred for better turns.



ITEM#	SIZE	DESCRIPTION	PACK PER CASE	CS. WT.	CS. CUBE	TI	HI
4401	4-1/2 x 1-1/2 inch	Self Adhering - Dark Blue	2 / 2,500	5	0.14	10	5
4402	4-1/2 x 1-1/2 inch	Self Adhering - Peach	2 / 2,500	5	0.14	10	5
4403	4-1/2 x 1-1/2 inch	Self Adhering - Teal	2 / 2,500	5	0.14	10	5
4404	4-1/2 x 1-1/2 inch	Self Adhering - Red	2 / 2,500	5	0.14	10	5
4405	4-1/2 x 1-1/2 inch	Self Adhering - Yellow	2 / 2,500	5	0.14	10	5
4406	4-1/2 x 1-1/2 inch	Self Adhering - Kelly Green	2 / 2,500	5	0.14	10	5
4407	4-1/2 x 1-1/2 inch	Self Adhering - White	2 / 2,500	5	0.14	10	5
4408	4-1/2 x 1-1/2 inch	Self Adhering - Mint Green	2 / 2,500	5	0.14	10	5
4409	4-1/2 x 1-1/2 inch	Self Adhering - Black	2 / 2,500	5	0.14	10	5
4410	4-1/2 x 1-1/2 inch	Self Adhering - Hot Pink	2 / 2,500	5	0.14	10	5
4411	4-1/2 x 1-1/2 inch	Self Adhering - Brown	2 / 2,500	5	0.14	10	5
4412	4-1/2 x 1-1/2 inch	Self Adhering - Light Blue	2 / 2,500	5	0.14	10	5
4413	4-1/2 x 1-1/2 inch	Self Adhering - Hunter Green	2 / 2,500	5	0.14	10	5
4414	4-1/2 x 1-1/2 inch	Self Adhering - Burgundy	2 / 2,500	5	0.14	10	5
4415	4-1/2 x 1-1/2 inch	Self Adhering - Purple	2 / 2,500	5	0.14	10	5
4416	4-1/2 x 1-1/2 inch	Self Adhering - Ivory	2 / 2,500	5	0.14	10	5
4455	4-1/2 x 1-1/2 inch	Self Adhering - Chile Pepper Design	2 / 2,500	5	0.14	10	5
4476	4-1/2 x 1-1/2 inch	Self Adhering - Us Flag "Support Our Troops"	2 / 2,500	5	0.14	10	5
4601	6-1/2 x 1-1/2 inch	Self Adhering - Dark Blue	2 / 2,500	6	0.14	10	5
4602	6-1/2 x 1-1/2 inch	Self Adhering - Peach	2 / 2,500	6	0.14	10	5
4603	6-1/2 x 1-1/2 inch	Self Adhering - Teal	2 / 2,500	6	0.14	10	5
4604	6-1/2 x 1-1/2 inch	Self Adhering - Red	2 / 2,500	6	0.14	10	5
4605	6-1/2 x 1-1/2 inch	Self Adhering - Yellow	2 / 2,500	6	0.14	10	5
4606	6-1/2 x 1-1/2 inch	Self Adhering - Kelly Green	2 / 2,500	6	0.14	10	5
4607	6-1/2 x 1-1/2 inch	Self Adhering - White	2 / 2,500	6	0.14	10	5
4608	6-1/2 x 1-1/2 inch	Self Adhering - Mint Green	2 / 2,500	6	0.14	10	5
4609	6-1/2 x 1-1/2 inch	Self Adhering - Black	2 / 2,500	6	0.14	10	5
4610	6-1/2 x 1-1/2 inch	Self Adhering - Hot Pink	2 / 2,500	6	0.14	10	5
4611	6-1/2 x 1-1/2 inch	Self Adhering - Brown	2 / 2,500	6	0.14	10	5
4612	6-1/2 x 1-1/2 inch	Self Adhering - Light Blue	2 / 2,500	6	0.14	10	5
4613	6-1/2 x 1-1/2 inch	Self Adhering - Hunter Green	2 / 2,500	6	0.14	10	5
4614	6-1/2 x 1-1/2 inch	Self Adhering - Burgundy	2 / 2,500	6	0.14	10	5
4615	6-1/2 x 1-1/2 inch	Self Adhering - Purple	2 / 2,500	6	0.14	10	5
4616	6-1/2 x 1-1/2 inch	Self Adhering - Ivory	2 / 2,500	6	0.14	10	5

Custom prints are available for all listed items. Our normal custom run requirement is 25,000 bands.

SILVERWARE BAGS - JAN SAN - HOSPITALITY ITEMS

From Silverware and Drinking Glass Bags to Hospital Bedside Bags, Waxed Receptacle Liners, and even Toilet Seat Bands, Brown is a one stop shop.

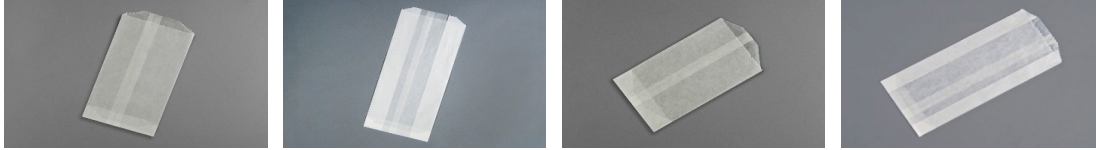


ITEM#	SIZE	DESCRIPTION	PACK PER CASE	CS. WT.	CS. CUBE	TI	HI
8A04	3-1/2 x 1-1/2 x 7-3/4	White Mg Drinking Glass Bag - Printed	6 / 1,000	32	2.20	8	3
8A07	2-3/4 x 10	Glassine Silverware Bag -Plain	5 / 2,000	39	2.80	8	3
8A09	2-3/4 x 10	White Mg Silverware Bag - Plain	5 / 2,000	31	2.80	8	3
8A09-WC	2-3/4 x 10	White Mg Silverware Bag - Plain	2,000	6	2.80	16	8
8B02	4 x 2-1/4 x 9	Sanitary Napkin Disposal Bag - Printed	1,000	7	0.40	16	9
8B02-D	dispenser	Sanitary Napkin Dispenser	1 EACH	2	0.07	1	1
908	7-1/2 x 3 x 10	Natural Waxed Sanitary Receptacle Bag	500	9	0.50	16	8
910	7-1/4 x 6-3/4 x 14	Natural Waxed Sanitary Receptacle Bag	1,000	38	1.60	8	5
912	8 x 7-3/4 x 17-1/8	Natural Waxed Sanitary Receptacle Bag	500	25	1.30	6	7
8B04	1-1/2" x 15-1/2"	White Mg Toilet Seat Bands - Printed	2,000	5	0.60	26	7
8B06	6 x 2 x 11	White Mg Hospital Bedside Bag	1,000	6	0.70	9	5

Custom prints are available for all listed paper items . Our normal custom run requirement is 25,000 bags. Prints of over 4 colors or of elaborate design have a 100,000 bag minimum.

GLASSINE BAGS

Translucent Glassine Bags have long been favored for the packaging of Chinese Noodles and Cookies. They are also used to package popcorn, caramel corn, and for some industrial applications. While possessed of some grease resistance, this is functional not apparent. In other words glassine will hold most grease but it will not hide it unless used as a liner.



ITEM#	SIZE	DESCRIPTION	PACK PER CASE	CS. WT.	CS. CUBE	TI	HI
101	2 x 3-1/2	Flat Style - Sugar Ration	18 / 2,000	43	3.30	4	3
105	2-3/4 x 4-1/4	Flat Style - 1 Oz	20 / 1,000	36	2.80	8	2
109	3 x 5-1/2	Flat Style - No 1 Peanut	20 / 1,000	50	2.80	6	2
111	3-1/4 x 4-3/4	Flat Style - #2 Peanut	20 / 1,000	46	2.80	8	2
113	3-3/4 x 5	Flat Style - 2 Oz	20 / 1,000	56	2.80	8	2
115	3-3/4 x 6-1/4	Flat Style - 1/4#	16 / 1,000	53	3.60	8	2
117	4-1/2 x 6-3/4	Flat Style - 1/2#	12 / 1,000	48	2.80	8	2
119	5-1/2 x 5-3/4	Flat Style - Sandwich	12 / 1,000	53	2.80	8	2
121	5-1/2 x 7-3/4	Flat Style - 1#	8 / 1,000	48	2.20	8	4
123	6-1/2 x 8-3/4	Flat Style - 2#	6 / 1,000	48	3.30	8	3
125	10 x 11	Flat Style - Pie	1,000	14	0.60	9	10
127	11-1/2 x 12	Flat Style - Coffee Cake	1,000	18	0.60	9	10
102	2-1/2 x 1-1/4 x 6-1/4	Square Style - 1/4#	16 / 1,000	64	3.60	5	3
104	3 x 1-5/8 x 6-1/2	Square Style - 1/2#	12 / 1,000	53	3.60	4	3
104-P	3 x 1-5/8 x 6-1/2	Square Style - 1/2# Printed Chinese Design	12 / 1,000	53	3.60	5	3
106	3-1/2 x 1-1/2 x 7-3/4	Square Style - 1#	8 / 1,000	42	2.80	8	3
108	3-1/2 x 2 x 7-3/4	Square Style - 1-1/2#	8 / 1,000	48	2.80	8	3
108-P	3-1/2 x 2 x 7-3/4	Square Style - 1# Printed Chinese Design	8 / 1,000	48	2.80	8	3
110	3-1/2 x 2-1/4 x 9	Square Style - 2-1/2#	6 / 1,000	41	2.50	6	4
112	4 x 2-1/2 x 8-1/2	Square Style - 3#	6 / 1,000	49	2.50	6	4
112-P	4 x 2-1/2 x 8-1/2	Square Style - 2# Printed Chinese Design	6 / 1,000	49	2.50	6	4
114	4 x 2-3/4 x 11	Square Style - 5# Popcorn	1,000	10	0.60	12	8
116	4-1/2 x 3-1/4 x 9-3/4	Square Style - 6# Popcorn	1,000	10	0.60	16	10
118	5 x 3-1/8 x 11	Square Style - Plain Glassine Popcorn	1,000	12	0.60	9	10
120	5-1/2 x 3-1/4 x 12	Square Style - Plain Glassine Popcorn	1,000	14	0.60	10	8
122	6 x 3-1/2 x 13	Square Style - Plain Glassine Popcorn	1,000	16	0.70	9	10

PRINTED GREASE RESISTANT CHINESE NOODLE BAGS

Printed from White Grease Resistant Paper, these bags are not translucent but provide an economical alternative to glassine cookie and noodle bags.



1A02	3 x 1-5/8 x 6-1/2	Chinese Delicious 1/2#	5 / 1,000	35	2.80	8	4
1A04	3-1/2 x 2 x 7-3/4	Chinese Delicious 1#	5 / 1,000	44	2.80	8	4
1A06	4 x 2-3/4 x 9	Chinese Delicious 2#	6 / 1,000	75	3.30	8	3

Custom prints are available for all listed items. Our normal custom run requirement is 25,000 bags. Prints of over 4 colors or of elaborate design have a 100,000 bag minimum.

CELLOPHANE BAGS

Don't hide your product, consider cellophane. This cellulose based product has excellent freshness barrier properties and clear, unclouded visibility. In the heavy grade it is also Heat Sealable. Res Ipsa Loquitur!



ITEM#	SIZE	DESCRIPTION	PACK PER CASE	CS. WT.	CS. CUBE	TI	HI
200	2-1/2 x 3/4 x 6-1/2	Square Style - 1/4#	2,000	5	0.40	15	6
201	2-1/2 x 1-1/4 x 7-1/2	Square Style - 1/2#	2,000	7	0.40	5	7
202	3 x 1-3/4 x 8-1/4	Square Style - 1#	2,000	9	0.70	15	6
203	3-1/2 x 2-1/4 x 9-3/4	Square Style - 2#	2,000	13	0.90	5	7
204	4 x 2-3/4 x 10-3/4	Square Style - 3#	2,000	17	0.90	15	6
207	4 x 2-3/4 x 10-3/4	Square Style - 3# HEAVY GAUGE	2,000	23	0.90	9	4
208	4-1/2 x 3-1/4 x 13	Square Style - 4# HEAVY GAUGE	2,000	31	1.60	9	4
210	3 X 3-3/4	Flat Style - 1 Oz	2,000	3	0.40	15	6
211	3 x 5-1/2	Flat Style - No 2 Peanut	2,000	4	0.40	16	7
212	3-3/4 x 6-1/4	Flat Style - 1/4#	2,000	6	0.40	15	6
213	4-3/4 x 6-3/4	Flat Style - 1/2#	2,000	8	0.40	16	6
214	5-3/4 x 7-3/4	Flat Style - 1#	2,000	10	0.70	15	6
215	6-3/4 x 9	Flat Style - 2#	2,000	14	0.70	12	6
218	4 x 2-1/8 x 8	Square Style - Thumb Cut Vending	2,000	18	0.50	9	6
219	3 x 1-3/4 x 10	Square Style - Thumb Cut Vending	2,000	18	0.50	15	6
220	3-1/2 x 2 x 11	Square Style - Thumb Cut Vending	2,000	22	0.60	9	5
221	4-1/2 x 2-1/4 x 8	Square Style - Thumb Cut Vending	2,000	20	0.40	15	6
222	5 x 2-1/4 x 10	Square Style - Thumb Cut Vending	2,000	26	0.90	12	6

CELLOPHANE SHEETS

For optimal visibility wrap your products in Cellophane!



7C06	06 X 12	Cellophane Sheets - for Transparent Wraps	6,000	13	0.30	12	10
7C10	10 x 10	Cellophane Sheets - for Transparent Wraps	5,000	17	0.33	12	10
7C12	12 x 12	Cellophane Sheets - for Transparent Wraps	5000	20	0.40	12	10
7C15	12 x 15	Cellophane Sheets - for Transparent Wraps	3,000	27	0.50	6	10
7C15X15	15 x 15	Cellophane Sheets - for Transparent Wraps	3,000	34	0.50	9	7

POLY-MESH PRODUCE HARVEST BAGS

Whether in a Grocery Produce Section or a Farm Stand, Durable Poly Mesh bags are handy for packaging most fruits and vegetables. Made of a durable run-proof poly mesh the bags feature an easy to use drawstring. Prepackaging and display are easy. Perfect for Self-Service and reuse! Corn, Onions, Potatoes, Oranges, or Lemons - all can be featured and sold in these color coded bags.



ITEM#	SIZE	DESCRIPTION	PACK PER CASE	CS. WT.	CS. CUBE	TI	HI
H0808-B	8-1/2 X 8-1/2	MESH BAGS - BLUE	1,000	18	2.48	6	5
H0808-FG	8-1/2 X 8-1/2	MESH BAGS - FLUORESCENT GREEN	1,000	18	2.48	6	5
H0808-G	8-1/2 X 8-1/2	MESH BAGS - GREEN	1,000	18	2.48	6	5
H0808-P	8-1/2 X 8-1/2	MESH BAGS - PURPLE	1,000	18	2.48	6	5
H0808-R	8-1/2 X 8-1/2	MESH BAGS - RED	1,000	18	2.48	6	5
H0808-W	8-1/2 X 8-1/2	MESH BAGS - WHITE	1,000	18	2.48	6	5
H0808-Y	8-1/2 X 8-1/2	MESH BAGS - YELLOW	1,000	18	2.48	6	5
H0816-B	8-1/2 X 17	MESH BAGS - BLUE	1,000	31	2.48	6	5
H0816-FG	8-1/2 X 17	MESH BAGS - FLUORESCENT GREEN	1,000	31	2.48	6	5
H0816-G	8-1/2 X 17	MESH BAGS - GREEN	1,000	31	2.48	6	5
H0816-P	8-1/2 X 17	MESH BAGS - PURPLE	1,000	31	2.48	6	5
H0816-R	8-1/2 X 17	MESH BAGS - RED	1,000	31	2.48	6	5
H0816-W	8-1/2 X 17	MESH BAGS - WHITE	1,000	31	2.48	6	5
H0816-Y	8-1/2 X 17	MESH BAGS - YELLOW	1,000	31	2.48	6	5
H1120-B	12-1/8 X 19	MESH BAGS - BLUE	1,000	40	2.48	5	4
H1120-FG	12-1/8 X 19	MESH BAGS - FLUORESCENT GREEN	1,000	40	2.48	5	4
H1120-G	12-1/8 X 19	MESH BAGS - GREEN	1,000	40	2.48	5	4
H1120-P	12-1/8 X 19	MESH BAGS - PURPLE	1,000	40	2.48	5	4
H1120-R	12-1/8 X 19	MESH BAGS - RED	1,000	40	2.48	5	4
H1120-W	12-1/8 X 19	MESH BAGS - WHITE	1,000	40	2.48	5	4
H1120-Y	12-1/8 X 19	MESH BAGS - YELLOW	1,000	40	2.48	5	4
H1531-B	14-3/4 X 30-1/2	MESH BAGS - BLUE	400	30	3.17	3	8
H1531-FG	14-3/4 X 30-1/2	MESH BAGS - FLUORESCENT GREEN	400	30	3.17	3	8
H1531-G	14-3/4 X 30-1/2	MESH BAGS - GREEN	400	30	3.17	3	8
H1531-P	14-3/4 X 30-1/2	MESH BAGS - PURPLE	400	30	3.17	3	8
H1531-R	14-3/4 X 30-1/2	MESH BAGS - RED	400	30	3.17	3	8
H1531-W	14-3/4 X 30-1/2	MESH BAGS - WHITE	400	30	3.17	3	8
H1531-Y	14-3/4 X 30-1/2	MESH BAGS - YELLOW	400	30	3.17	3	8

Custom prints are not available for these items .

CATEGORY TO PAGE INDEX

AUTOMATIC BAG	19	20	NAPKIN RING BANDS	30
AUTOMATIC DUPLEX BAG	21	22	NATURAL KRAFT SHEET	5 6
BAGEL BAG	14	20	ONION RING BAG	15
BANDS	30	31	PAN LINER	4
BARBEQUE	12	22	PANEL BAG	18
BREAD BAG	16	17 18	PATTY PAPER	5
BURRITO	12		PEANUT BAG	9
BUTCHER PAPER ROLL	25		PEOPLE BAG	29
CANARY SHEET	5	6	PICK UP TISSUE	5 8
CANDY BAG	21	29	PICKLE BAG	15
CELLOPHANE	33		PIZZA BAG	10
CHEESEBURGER BAG	12	15	PIZZA LINER	10
CHICKEN BAG	12		PIZZA SLICE BAG	10
CHILE WRAP	6		POCKET (FOIL)	12
CHROMIUM FREE PAN LINER	4		POLY MESH BAGS	34
CIRCLE	4		POPCORN BAG	9
COFFEE BAG	21		QUILON PAN LINER	4 10
CONE	14		QUILON PIZZA LINER	4 10
COOKIE BAG	13	14 15 21	RECEPTACLE LINERS	31
CORN DOG	11		ROLLS	23 24 25 26 27 28
CORNER PANEL BAG	18		SACKS	20
DELI BAG	22		SANDWICH BAG	12 14 15
DELI SHEETS	8		SANITARY NAPKIN BAGS	31
DOGGIE BAG	29		SCHOOL LUNCH BAG	20
DOUBLE OPENING BAG	14	15	SHEET	5 6 7
DRINKING GLASS BAGS	31		SILICONE PAN LINER	4 10
DRYWAXED SHEET	5	6	SILICONE PIZZA LINER	4 10
DUPLEX BAG	21	22 29	SILVERWARE BAGS	31
FLUTED TRAY	11		SLICE BAG	10
FOIL BAG	12	22	SOS BAGS	19 20
FOIL GARLIC BREAD BAG	17		STEAK PAPER	23 24
FOIL WRAP	7		SUB BAG	11
FRENCH FRY BAG	13		SUB WRAP	5 6
FRENCH FRY CONE	14		TABLE COVER ROLL	25
GARBAGE CAN LINERS	31		TACO BAG	15
GARLIC BREAD BAG	17		TENDERLOIN BAG	12
GIBLET BAG	29		THEATER POPCORN BAG	9
GLASSINE BAGS	32		TIN-TIE BAG	21 22
GOLDENROD SHEET	5		TOILET SEAT BANDS	31
GREASE RESISTANT SHEET	5	6	TRANSPARENT WAXED SANDWICH BAG	14
HAMBURGER BAG	12	15	TRAY	11
HARVEST BAGS	34		WEDDING CAKE BAG	29
HOSPITAL BEDSIDE BAG	31		WINDOW BAG	21
HOT DOG BAG	11		WRAP	5 6 7
INTERFOLD	8		WRAP AROUND SUB BAG	11
MENU TISSUE	5			
MESH BAGS	34			

36 NUMERICAL INDEX A

ITEM	PG	ITEM	PG	ITEM	PG	ITEM	PG	ITEM	PG	ITEM	PG	ITEM	PG
101	32	526	9	1408	16	2106	8	5060	25	5216	24	7330	28
102	32	530	9	1409	19	2108	8	5100	23	5217	24	7336	28
104	32	601	11	1410	16	2110	8	5101	23	5218	24	7348	28
105	32	602	11	1411	19	2112	8	5102	23	5219	24	7518	28
106	32	603	11	1412	16	2115	8	5103	23	5231	24	7520	28
108	32	604	11	1413	19	2206	8	5104	23	5235	24	7524	28
109	32	606	11	1414	16	2208	8	5105	23	5312	26	7530	28
110	32	608	11	1416	16	2210	8	5106	23	5315	26	7536	28
111	32	610	11	1417	19	2212	8	5107	23	5318	26	7548	28
112	32	612	11	1419	19	2215	8	5108	23	5320	26	104-P	32
113	32	614	11	1420	16	2306	8	5109	23	5324	26	108-P	32
114	32	616	11	1421	19	2308	8	5110	23	5330	26	10A02	29
115	32	618	11	1423	19	2310	8	5111	23	5336	26	10B02	29
116	32	622	11	1424	16	2312	8	5112	23	5348	26	10B04	29
117	32	624	11	1426	16	2315	8	5113	23	5360	26	10C02	29
118	32	626	11	1428	16	3032	9	5114	23	5412	27	10W17	29
119	32	701	15	1430	16	3046	9	5115	23	5415	27	10Y02	29
120	32	703	15	1432	16	3085	9	5116	23	5416	27	112-P	32
121	32	704	14	1500	21	3130	9	5117	23	5418	27	1224-P	17
122	32	705	14	1501	21	3170	9	5118	23	5420	27	12P07	18
123	32	707	14	1502	21	4401	30	5119	23	5424	27	12P13	18
125	32	709	15	1504	21	4402	30	5120	23	5425	27	12P14	18
127	32	710	14	1601	20	4403	30	5121	23	5430	27	12P18	18
200	33	711	15	1602	20	4404	30	5122	23	5431	27	12P18-CP	18
201	33	714	14	1603	20	4405	30	5123	23	5432	27	12P19	18
202	33	801	13	1604	20	4406	30	5124	23	5436	27	12P21	18
203	33	802	13	1606	20	4407	30	5125	23	5442	27	12P22	18
204	33	803	13	1608	20	4408	30	5126	23	5481	27	12P23	18
207	33	804	13	1610	20	4409	30	5127	23	5512	26	12P24	18
208	33	805	13	1612	20	4410	30	5128	23	5515	26	12P25	18
210	33	806	13	1616	20	4411	30	5129	23	5518	26	12P26	18
211	33	807	13	1720	21	4412	30	5130	23	5520	26	12P27	18
212	33	808	13	1721	21	4413	30	5131	23	5524	26	12P28	18
213	33	809	13	1730	21	4414	30	5132	23	5530	26	12P35	18
214	33	810	13	1731	21	4415	30	5133	23	5536	26	1310-NK	11
215	33	908	31	1732	21	4416	30	5134	23	5548	26	13A00	17
218	33	910	31	1733	21	4455	30	5135	23	5612	27	13A02	17
219	33	912	31	1740	21	4476	30	5136	23	5615	27	13A02-NK	17
220	33	1002	29	1741	21	4601	30	5137	23	5618	27	13A04	17
221	33	1003	29	1742	21	4602	30	5138	23	5620	27	13A04-NK	17
222	33	1102	29	1744	21	4603	30	5139	23	5681	27	13A06	17
301	29	1202	16	1745	21	4604	30	5140	23	5715	26	13A08	17
303	29	1204	16	1749	21	4605	30	5141	23	5718	26	13A10	17
305	29	1206	16	1750	21	4606	30	5142	23	5720	26	13A12	10
307	29	1208	16	1751	21	4607	30	5143	23	5724	26	13A20	17
311	29	1210	16	1752	21	4608	30	5144	23	5736	26	13A20-NK	17
313	29	1214	16	1754	21	4609	30	5200	24	5818	27	13A22	17
315	29	1216	16	1755	21	4610	30	5201	24	5912	25	13A22-NK	17
320	29	1218	16	1759	21	4611	30	5202	24	5915	25	13A24	17
402	29	1224	16	1903	22	4612	30	5203	24	5918	25	13A24-NK	17
407	29	1228	16	1904	22	4613	30	5204	24	5920	25	1401-A	19
409	29	1230	16	1905	22	4614	30	5205	24	5924	25	1401-B	19
503	9	1304	17	1906	22	4615	30	5206	24	5930	25	1401-BNK	19
506	9	1306	17	1907	22	4616	30	5207	24	5936	25	1405-A	19
508	9	1400	16	1908	22	5012	25	5208	24	5948	25	1405-B	19
510	9	1401	19	1909	22	5015	25	5209	24	5960	25	1405-BNK	19
512	9	1402	16	1915	22	5018	25	5210	24	6000	27	1407-A	19
514	9	1403	19	2006	8	5020	25	5211	24	6018	27	1407-B	19
520	9	1404	16	2008	8	5024	25	5212	24	7315	28	1407-BNK	19
521	9	1405	19	2010	8	5030	25	5213	24	7318	28	1409-A	19
522	9	1406	16	2012	8	5036	25	5214	24	7320	28	1409-B	19
524	9	1407	19	2015	8	5048	25	5215	24	7324	28	1409-BNK	19

37 NUMERICAL INDEX B

ITEM	PG	ITEM	PG	ITEM	PG	ITEM	PG	ITEM	PG	ITEM	PG	ITEM	PG
1411-A	19	2208-2	8	5518-NK	26	5C13-2T	7	74P24	28	7B6-BR	6	9B08	10
1411-B	19	2210-2	8	5524-B	26	5C13-2Y	7	75P15	28	7B6-C	6	9B10	10
1411-BNK	19	2212-2	8	5524-NK	26	5C13-BL	7	75P18	28	7B6-G	6	9B12	10
14A1	29	3032-B	9	5530-NK	26	5C13-G	7	75P20	28	7B6-H	6	9B13	10
14A2	29	3032-NK	9	5536-NK	26	5C13-R	7	75P24	28	7B6-MEX	6	9B14	10
14A5	29	3046-B	9	5715-M	26	5C14	7	75P36	28	7B6-NEWS	6	9B16	10
14A6	29	3046-NK	9	5718-M	26	5C14-BL	7	7A01	14	7B6-R	6	9B18	10
158-2	4	3085-B	9	5912-NK	28	5C14-BQ	7	7A02	14	7B6-Y	6	9B20	10
159-1	4	3085-NK	9	5915-NK	28	5C14-C	7	7A04	14	7B7-C	6	9B22	10
160-1	4	3130-B	9	5918-NK	28	5C14-FC	7	7B1	5	7B7-D	6	9C08	10
1601-NK	20	3130-NK	9	5920-NK	28	5C14-G	7	7B10-RC	6	7B7-H	6	9C08-Q	10
1602-NK	20	3170-B	9	5924-NK	28	5C14-GR	7	7B11	5	7B8	6	9C09-Q	10
1603-NK	20	3170-NK	9	5930-NK	28	5C14-H	7	7B11-P	6	7B9	5	9C10	10
1604-NK	20	5012-A	25	5936-NK	28	5C14-HC	7	7B12	5	7B9-FNC	6	9C10-Q	10
1606-NK	20	5015-A	25	5948-NK	28	5C14-R	7	7B12-BK	6	7B9-RC	6	9C12	10
1608-NK	20	5015-B	25	5A00	12	5C14-RB	7	7B12-BL	6	7BCHILE	6	9C1218-Q	10
1610-NK	20	5015-EC	25	5A02	12	5C16	7	7B12-HTG	6	7C06	33	9C12-Q	10
161-1	4	5015-ECB	25	5A04	12	5Q01	7	7B12-NK	5	7C10	33	9C14	10
161-2	4	5015-NK	28	5A06	12	5Q04	7	7B12-RC	6	7C12	33	9C14-Q	10
1612-NK	20	5015-WC	25	5A08	12	5Q06	7	7B14	5	7C15	33	9C16	10
1616-NK	20	5018-A	25	5A10	12	5Q10	7	7B14-NK	5	7C15X15	33	9C16-Q	10
162-1	4	5018-B	25	5A12	12	5Q12	7	7B14-Y	5	7C2	15	9C18	10
162-50	4	5018-EC	25	5A14	12	5Q16	7	7B15	5	7C3	15	9C18-Q	10
163-1	4	5018-NK	28	5A14-P	12	5Q22	7	7B1516	5	7C6	15	H0808-B	34
163-P	4	5018-WC	25	5A16	12	6004-W	27	7B1516-NK	5	7G14	5	H0808-FG	34
164-1	4	5020-A	25	5A20	12	6009-P	27	7B15-NK	5	7G1516	5	H0808-G	34
165-1	4	5020-B	25	5A22	12	6009-W	27	7B15-R	6	7G16-NK	5	H0808-P	34
166-10	4	5020-EC	25	5A24	12	6012-P	27	7B16	5	7H1516	5	H0808-R	34
166-11	4	5020-NK	28	5A26	12	6012-W	27	7B16-BK	6	7P12-BL	6	H0808-W	34
166-12	4	5020-WC	25	5A30	12	608-30WC	11	7B16-HTG	6	7P12-R	6	H0808-Y	34
166-13	4	5024-A	25	5A31	12	622-NKWA	11	7B16-RC	6	7P15-R	6	H0816-B	34
166-6	4	5024-B	25	5A32	12	622-WA	11	7B18-1	5	7P16	6	H0816-FG	34
166-7	4	5024-EC	25	5A33	12	626-NK	11	7B1-A	5	7P20-G	6	H0816-G	34
166-8	4	5024-NK	28	5A36	12	6A05	20	7B2	5	7P6	6	H0816-P	34
166-9	4	5024-WC	25	5A37	12	6A05-K	20	7B2	27	7P6-R	6	H0816-R	34
166-95	4	5030-A	25	5A38	12	6A06	20	7B2-T	5	7Q12	5	H0816-W	34
167-1	4	5030-B	25	5A42	12	6A06-NK	20	7B3	5	7Q1516	5	H0816-Y	34
168-1	4	5030-EC	25	5B08	22	704-18WC	14	7B4	5	7QC12	5	H1120-B	34
169-1	4	5030-NK	28	5B10	22	704-19WC	14	7B45	27	7QC1516	5	H1120-FG	34
16G10	20	5030-WC	25	5B12	22	704-19YWC	14	7B4-BK	6	7QC12-NK	5	H1120-G	34
16G12	20	5036-A	25	5B14	22	706-BL	15	7B4-BL	6	7QC1516-NK	5	H1120-P	34
16G4	20	5036-B	25	5B16	22	706-BR	15	7B4-HTG	6	801-WC	13	H1120-R	34
16G6	20	5036-EC	25	5B18	22	706-G	15	7B4-NK	5	805-1	13	H1120-W	34
16G8	20	5036-NK	28	5B26	22	706-R	15	7B4NK-BK	6	807-3WC	13	H1120-Y	34
1903-T	22	5036-WC	25	5B32	22	706-Y	15	7B4NK-BL	6	808-12WC	13	H1531-B	34
1905-T	22	506-R	9	5B34	22	707-NK	14	7B4NK-G	6	811-6WC	13	H1531-FG	34
1907-T	22	510-1	9	5B36	22	708-C	15	7B4NK-R	6	813-8WC	13	H1531-G	34
1909-T	22	510-WC	9	5B40	22	708C-WC	15	7B4NK-Y	6	815-9WC	13	H1531-P	34
1A02	32	514-1	9	5C12	7	708-H	15	7B4-R	6	8A04	31	H1531-R	34
1A04	32	521-1	9	5C1212	7	710-4	14	7B4-YC	5	8A07	31	H1531-W	34
1A06	32	5318-F	26	5C12-HD	7	710-A	15	7B4-YEL	6	8A09	31	H1531-Y	34
2006-6	8	5318-FB	26	5C13	7	711-NK	14	7B4-YG	5	8A09-WC	31		
2006-NK	8	5318-M	26	5C13-2B	7	712-25NK	14	7B55	27	8B02	31		
2106-NK	8	5318-NK	26	5C13-2CB	7	712-25WC	14	7B55-8	27	8B02-D	31		
2108-NK	8	5318-NKB	26	5C13-2CG	7	712-26NK	14	7B55-D	27	8B04	31		
2108-RC	8	5436-NK	27	5C13-2CM	7	714-1	14	7B5-BL	6	8B06	31		
2110-2	8	5512-NK	26	5C13-2CR	7	715-10WC	14	7B5-BR	6	9B01	10		
2110-NK	8	5515-B	26	5C13-2CT	7	716-14WC	14	7B5-G	6	9B02	10		
2112-NK	8	5515-M	26	5C13-2CY	7	720-16WC	14	7B5-H	6	9B03	10		
2112-RC	8	5515-NK	26	5C13-2G	7	74P15	28	7B5-R	6	9B04	10		
2115-NK	8	5518-B	26	5C13-2M	7	74P18	28	7B5-Y	6	9B05	10		
2115-RC	8	5518-M	26	5C13-2R	7	74P20	28	7B6-BL	6	9B06	10		